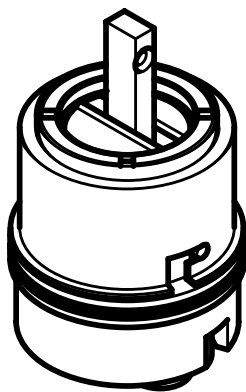


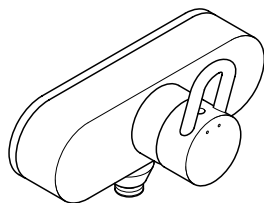
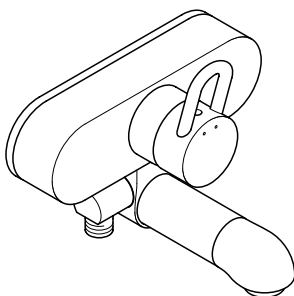
# Service



14096000

**hansgrohe**

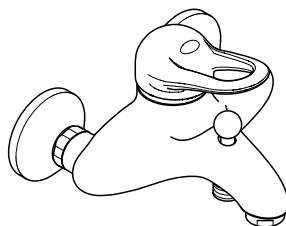
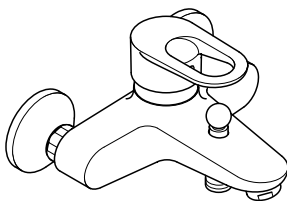
**Montage siehe Seite** 3  
**Montage voir page** 3  
**Assembly see page** 3  
**Montaggio vedere pagina** 3  
**Montaje ver pagina** 3  
**Montering zie blz.** 3  
**Montering se side** 3  
**Instalação ver a pág.** 3



18400XXX, 18420XXX, 19400XXX,  
 16400XXX, 16420XXX, 13450XXX,  
 13430XXX, 35400800, 15400XXX,  
 15420XXX

18600XXX, 34600XXX, 19600XXX,  
 11600XXX, 16600XXX, 36600XXX,  
 13650XXX, 35600800, 15600XXX,  
 14600XXX, 31600XXX

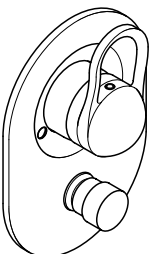
**Montage siehe Seite** 6  
**Montage voir page** 6  
**Assembly see page** 6  
**Montaggio vedere pagina** 6  
**Montaje ver pagina** 6  
**Montering zie blz.** 6  
**Montering se side** 6  
**Instalação ver a pág.** 6



14400XXX, 31400XXX

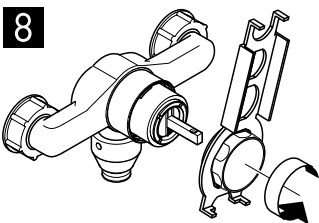
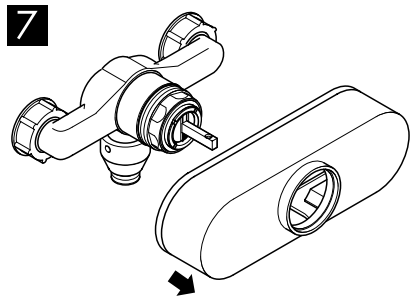
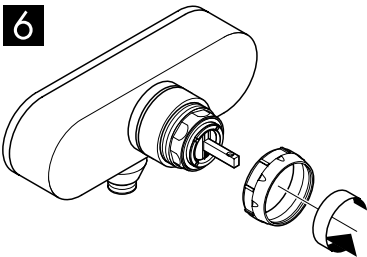
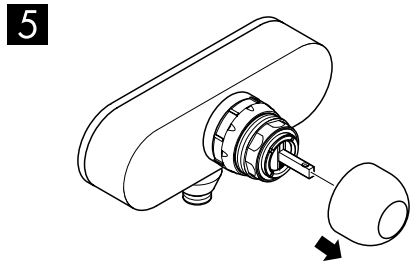
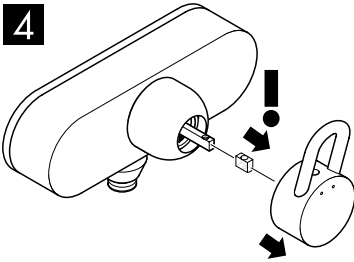
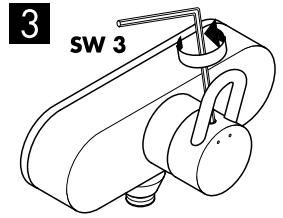
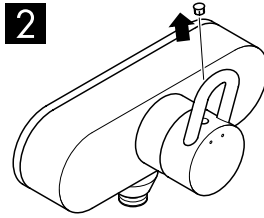
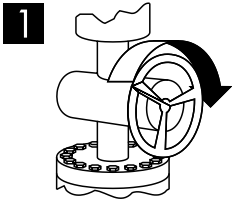
34400XXX, 36400XXX

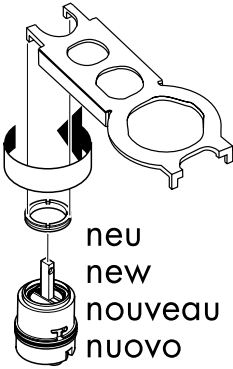
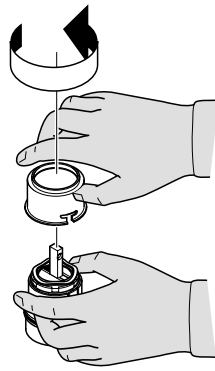
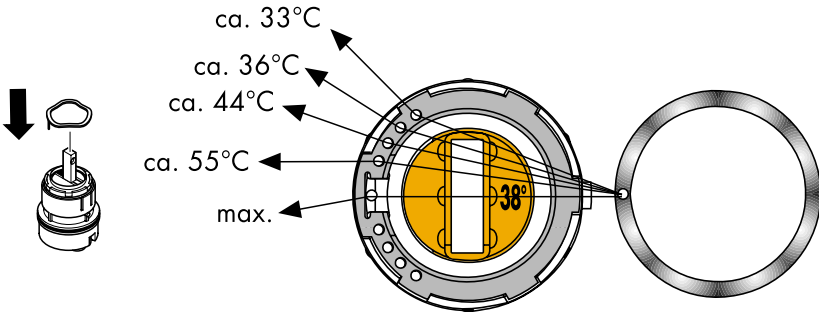
**Montage siehe Seite** 9  
**Montage voir page** 9  
**Assembly see page** 9  
**Montaggio vedere pagina** 9  
**Montaje ver pagina** 9  
**Montering zie blz.** 9  
**Montering se side** 9  
**Instalação ver a pág.** 9



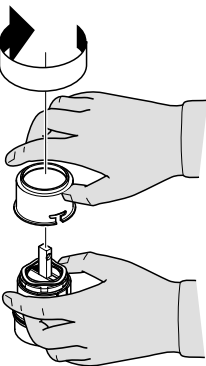
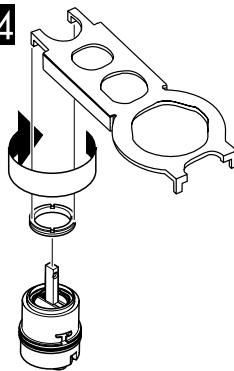
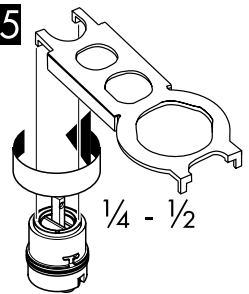
13505180, 18405XXX, 18409XXX,  
 11405XXX, 11409XXX, 17405XXX,  
 17409XXX, 36405XXX, 36409XXX,  
 16405XXX, 16409XXX, 19405XXX,  
 19409XXX, 15405XXX, 15409XXX,  
 14405XXX, 14409XXX, 13456XXX,  
 13459XXX, 10405XXX, 10409XXX,  
 35405800, 35409800, 34405XXX,  
 34409XXX

13607180, 18605XXX, 11605XXX,  
 11605XXX, 36605XXX, 16605XXX,  
 19605XXX, 15605XXX, 14605XXX,  
 13656XXX, 10605XXX, 35605800,  
 34605XXX

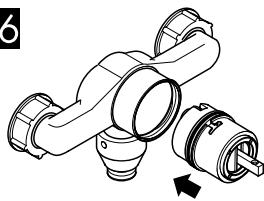


**10****11****12**

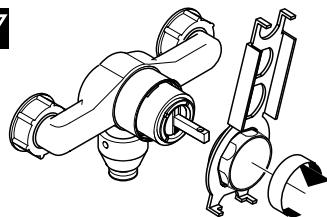
Warmwasserbegrenzung: Warmwassertemperatur 60°C, Kaltwassertemperatur 10°C, Fließdruck 3 bar  
 Limiteur d'eau chaude: Température d'eau chaude 60°C, Température d'eau froide 10°C, Pression dynamique 3 bar  
 hot water limiter: hot water temperature 60°C, cold water temperature 10°C, flow rate 3 bar  
 limitatore di acqua calda: temperatura dell'acqua calda 60°C, temperatura dell'acqua fredda 10°C, pressione 3 bar  
 limitación del agua caliente: temperatura del agua caliente 60°C, temp. del agua fría 10°C, presión dinámica 3 bar  
 Warmwaterbegrenzung: Warmwassertemperatur 60°C, Koudwassertemperatuur 10°C, Stroomdruk 3 atm  
 varmtvandsbegrænser: varmtvandstemperatur 60°C, koldt vandstemperatur 10°C, vandtryk 3 bar  
 Limitador de água quente: Temperatura da água quente 60°C, Temperatura da água fria 10°C, Pressão 3 bar

**13****14****15**

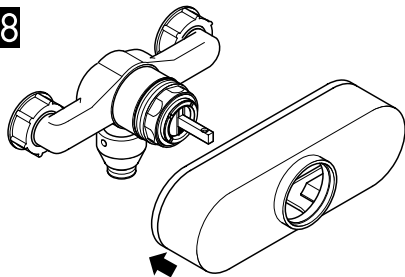
16



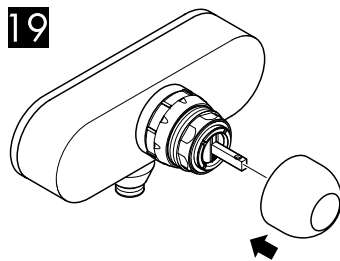
17



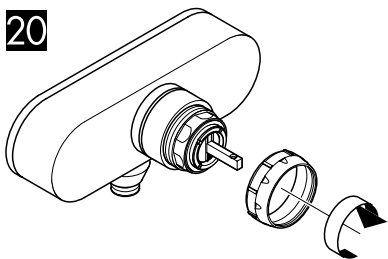
18



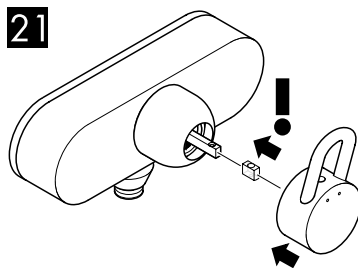
19



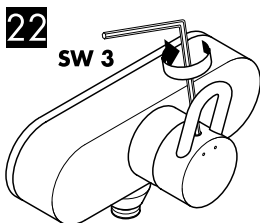
20



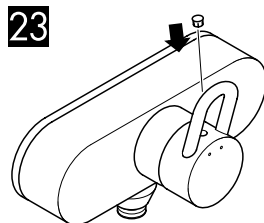
21



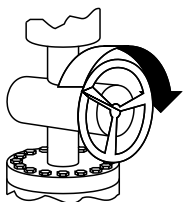
22



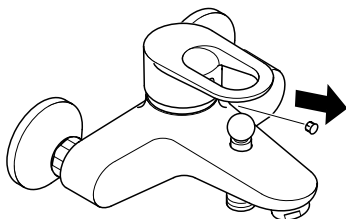
23



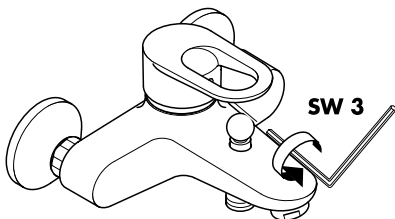
1



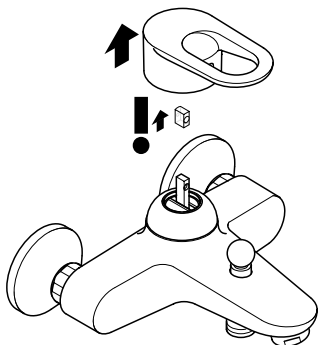
2



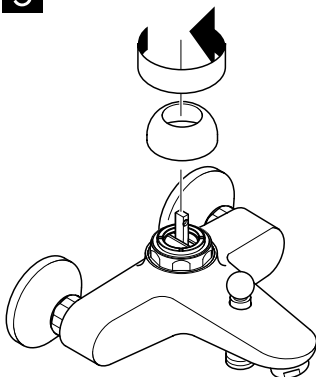
3



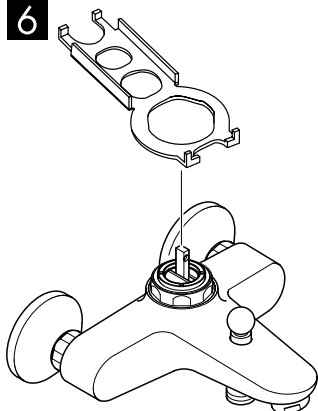
4



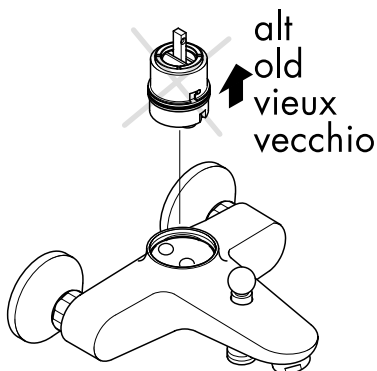
5

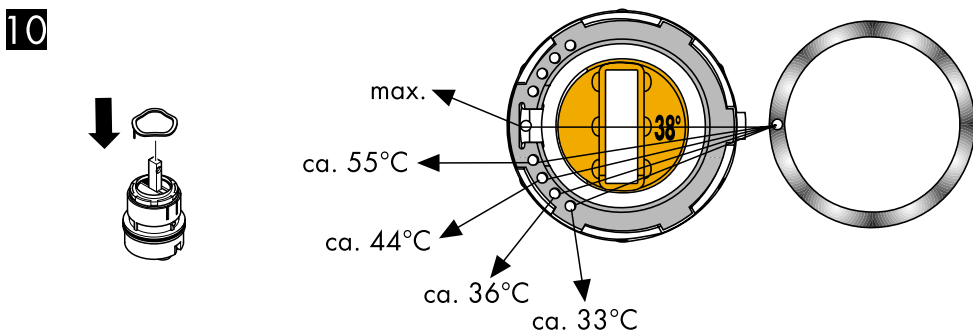
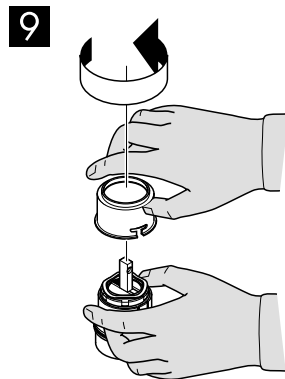
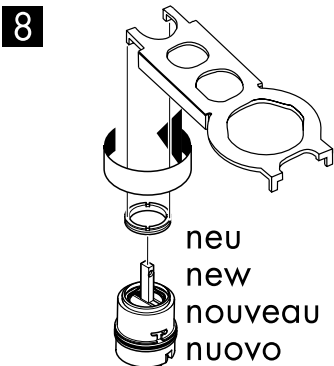


6

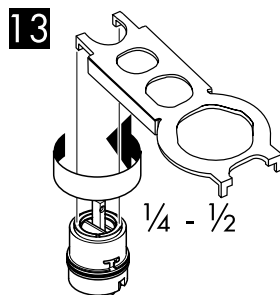
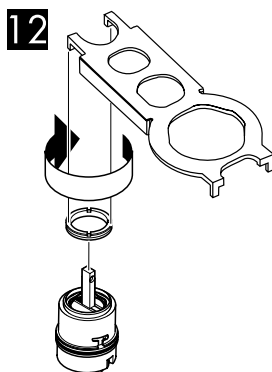
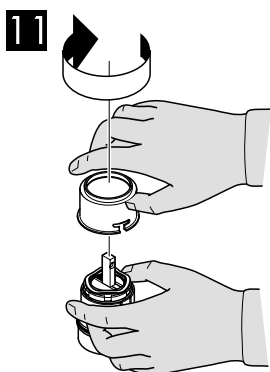


7

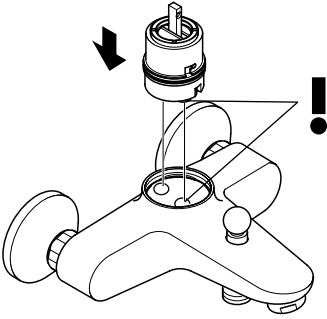




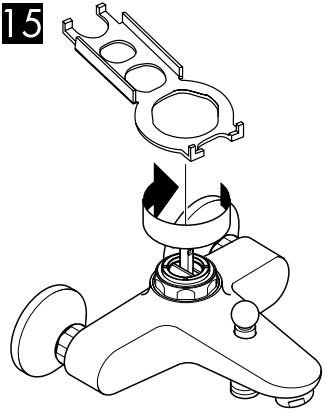
Warmwasserbegrenzung: Warmwassertemperatur 60°C, Kaltwassertemperatur 10°C, Fließdruck 3 bar  
 Limiteur d'eau chaude: Température d'eau chaude 60°C, Température d'eau froide 10°C, Pression dynamique 3 bar  
 hot water limiter: hot water temperature 60°C, cold water temperature 10°C, flow rate 3 bar  
 limitatore di acqua calda: temperatura dell'acqua calda 60°C, temperatura dell'acqua fredda 10°C, pressione 3 bar  
 limitación del agua caliente: temperatura del agua caliente 60°C, temp. del agua fría 10°C, presión dinámica 3 bar  
 Warmwaterbegrenzing: Warmwatertemperatuur 60°C, Koudwatertemperatuur 10°C, Stroomdruk 3 atm  
 varmtvandsbegrænser: varmtvandstemperatur 60°C, koldt vandstemperatur 10°C, vandtryk 3 bar  
 Limitador de água quente: Temperatura da água quente 60°C, Temperatura da água fria 10°C, Pressão 3 bar



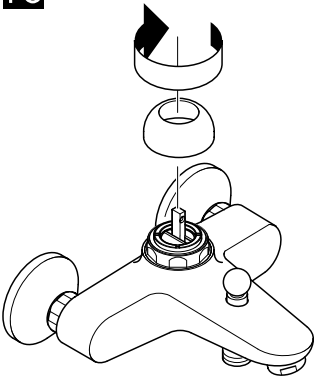
14



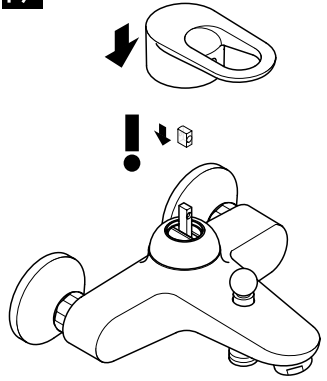
15



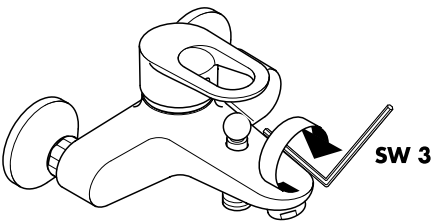
16



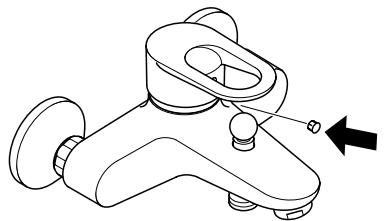
17



18

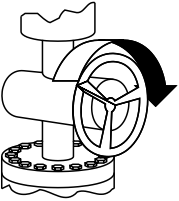


19

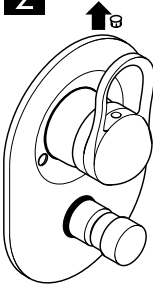




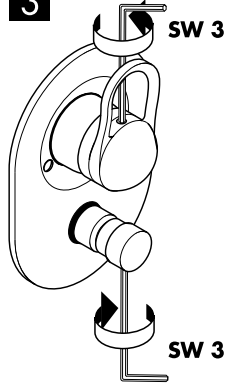
1



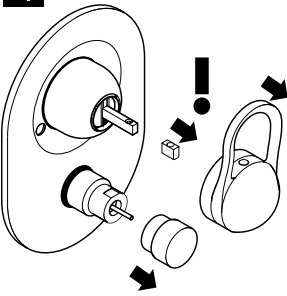
2



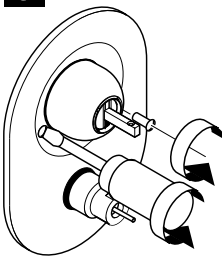
3



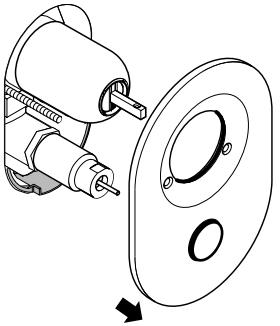
4



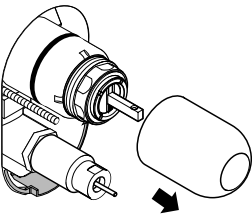
5



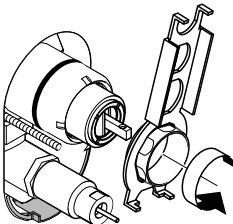
6



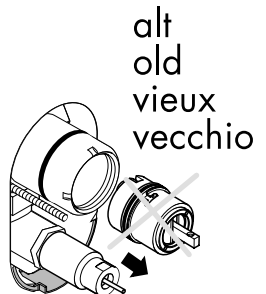
7

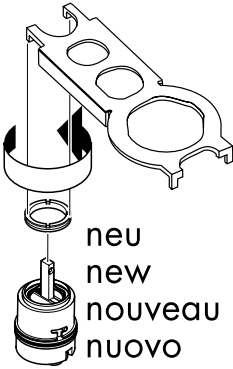
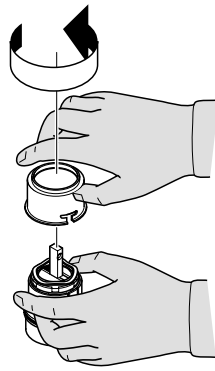
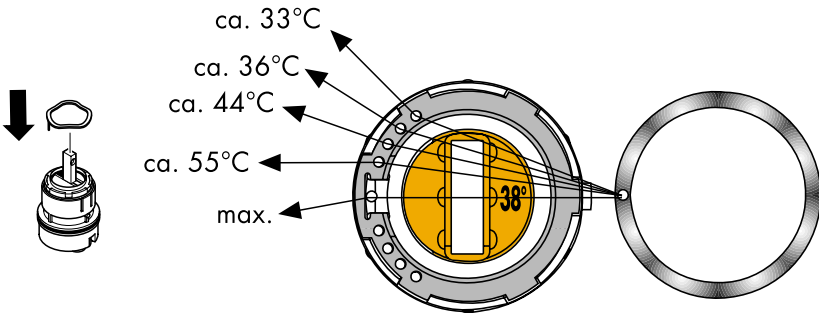


8

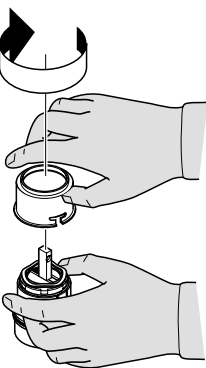
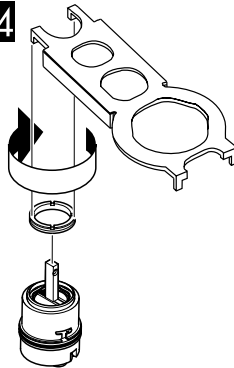
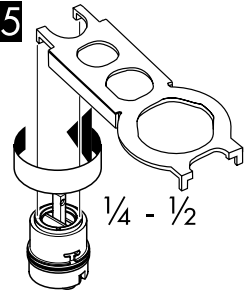


9

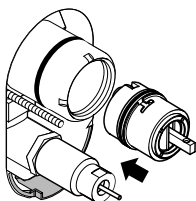


**10****11****12**

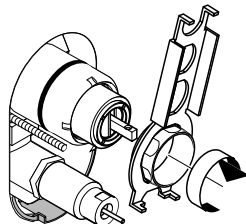
Warmwasserbegrenzung: Warmwassertemperatur 60°C, Kaltwassertemperatur 10°C, Fließdruck 3 bar  
 Limiteur d'eau chaude: Température d'eau chaude 60°C, Température d'eau froide 10°C, Pression dynamique 3 bar  
 hot water limiter: hot water temperature 60°C, cold water temperature 10°C, flow rate 3 bar  
 limitatore di acqua calda: temperatura dell'acqua calda 60°C, temperatura dell'acqua fredda 10°C, pressione 3 bar  
 limitación del agua caliente: temperatura del agua caliente 60°C, temp. del agua fría 10°C, presión dinámica 3 bar  
 Warmwaterbegrenzung: Warmwassertemperatur 60°C, Koudwassertemperatuur 10°C, Stroomdruk 3 atm  
 varmtvandsbegrænser: varmtvandstemperatur 60°C, koldt vandstemperatur 10°C, vandtryk 3 bar  
 Limitador de água quente: Temperatura da água quente 60°C, Temperatura da água fria 10°C, Pressão 3 bar

**13****14****15**

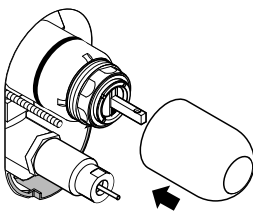
16



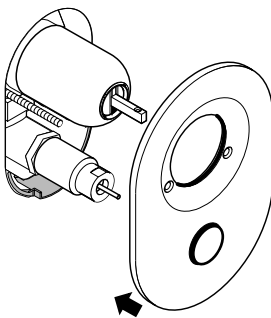
17



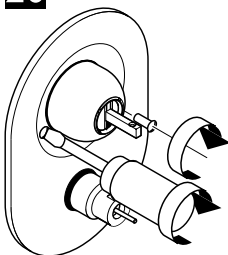
18



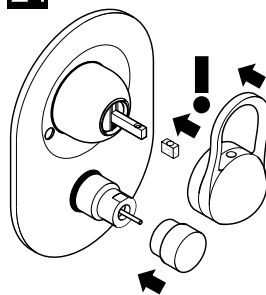
19



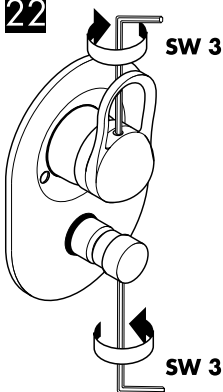
20



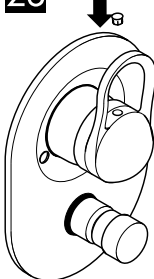
21



22



23



---

**hansgrohe**

AXOR | PHËRO

Hansgrohe · Postfach 1145 · D-77761 Schiltach · Telefon +49 (0) 78 36/51-1282 · Telefax +49 (0) 7836/511440  
E-Mail: [info@hansgrohe.com](mailto:info@hansgrohe.com) · Internet: [www.hansgrohe.com](http://www.hansgrohe.com)

11/2000  
9.07486.01