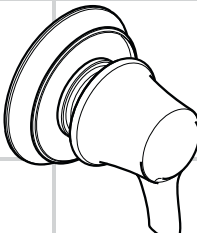

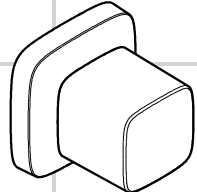
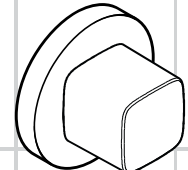
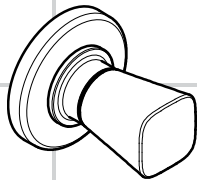
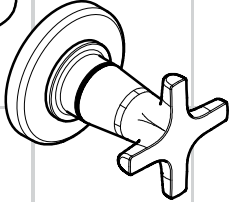


<b>DE</b>	Gebrauchsanleitung / Montageanleitung	2		
<b>FR</b>	Mode d'emploi / Instructions de montage	2		
<b>EN</b>	Instructions for use / assembly instructions	3		
<b>IT</b>	Istruzioni per l'uso / Istruzioni per Installazione	3		
<b>ES</b>	Modo de empleo / Instrucciones de montaje	4		
<b>NL</b>	Gebruiksaanwijzing / Handleiding	4		
<b>DK</b>	Brugsanvisning / Monteringsvejledning	5	<b>Metris Classic</b> <b>Talis Classic</b> 15961000	<b>Talis / Focus</b> 15971000
<b>PT</b>	Instruções para uso / Manual de Instalação	5		
<b>PL</b>	Instrukcja obsługi / Instrukcja montażu	6		
<b>CS</b>	Návod k použití / Montážní návod	6		
<b>SK</b>	Návod na použitie / Montážny návod	7		
<b>ZH</b>	用户手册 / 组装说明	7		
<b>RU</b>	Руководство пользователя / Инструкция по монтажу	8		
<b>HU</b>	Használati útmutató / Szerelési útmutató	8		
<b>FI</b>	Käyttöohje / Asennusohje	9		
<b>SV</b>	Brugsanvisning / Monteringsanvisning	9		
<b>LT</b>	Vartotojo instrukcija / Montavimo instrukcijos	10		
<b>HR</b>	Upute za uporabu / Uputstva za instalaciju	10		
<b>TR</b>	Kullanım kılavuzu / Montaj kılavuzu	11	<b>PuraVida</b> 15978XXX	<b>Metris</b> 31677000
<b>RO</b>	Manual de utilizare / Instrucțiuni de montare	11		
<b>EL</b>	Οδηγίες χρήσης / Οδηγία συναρμολόγησης	12		
<b>SL</b>	Navodilo za uporabo / Navodila za montažo	12		
<b>ET</b>	Kasutusjuhend / Paigaldusjuhend	13		
<b>LV</b>	Lietošanas pamācība / Montāžas instrukcija	13		
<b>SR</b>	Uputstvo za upotrebu / Uputstvo za montažu	14		
<b>NO</b>	Brugsanvisning / Montasjeveiledning	14		
<b>BG</b>	Инструкция за употреба / Ръководство за монтаж	15		
<b>SQ</b>	Udhëzuesi i përdorimit / Udhëzime rreth montimit	15		
<b>AR</b>	دليل الاستخدام / تعليمات التجميع	16		



## Español

## Nederlands

### Indicaciones de seguridad

- ⚠ Durante el montaje deben utilizarse guantes para evitar heridas por aplastamiento o corte.

### Indicaciones para el montaje

- Antes del montaje se debe examinar el producto contra daños de transporte. Después de la instalación se reconoce ningún daño de transporte o de superficie.
- Los conductos y la grifería deben montarse, lavarse y comprobarse según las normas vigentes.
- Es obligatorio el cumplimiento de las directrices de instalación vigentes en el país respectivo.


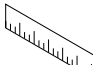

### Veiligheidsinstructies



- ⚠ Bij de montage moeten ter voorkoming van knel- en snijwonden handschoenen worden gedragen.

### Montage-instructies


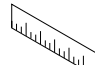
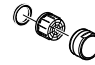
- Vóór de montage moet het product gecontroleerd worden op transportschade. Na de inbouw wordt geen transport- of oppervlakteschade meer aanvaard.
- De leidingen en armaturen moeten gemonteerd, gespoeld en gecontroleerd worden volgens de geldige normen.
- De in de overeenkomstige landen geldende installatie-richtlijnen moeten nageleefd worden.



### Descripción de símbolos

-  No utilizar silicona que contiene ácido acético!
-  **Dimensiones** (ver página 20)
-  **Repuestos** (ver página 21)
  - XXX = Acabados
  - 000 = cromado
  - 400 = blanco/cromado

-  **Marca de verificación** (ver página 24)
-  **Limpiar** (ver el folleto adjunto)

### Symboolbeschrijving

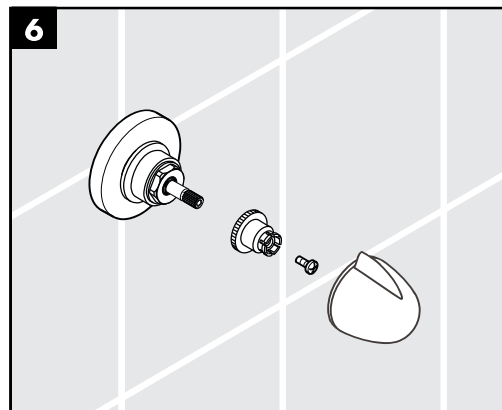
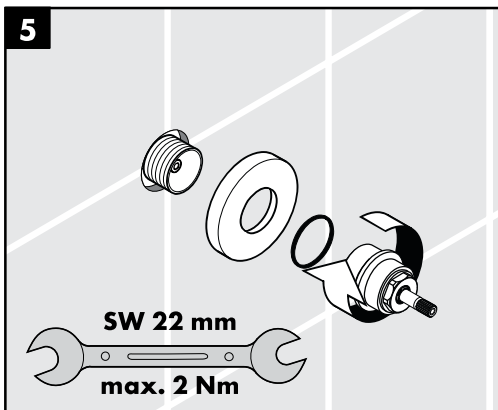
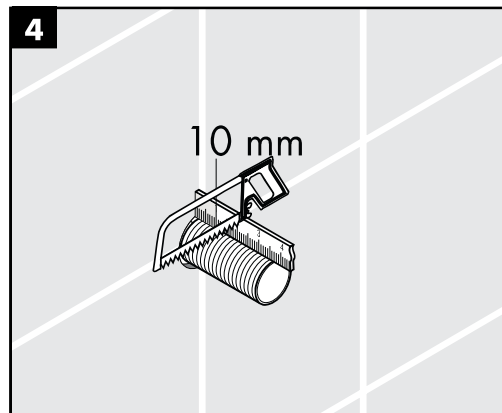
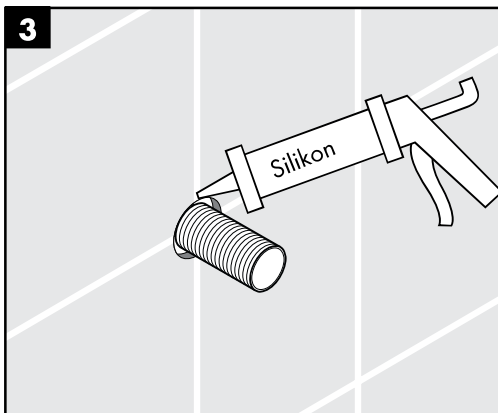
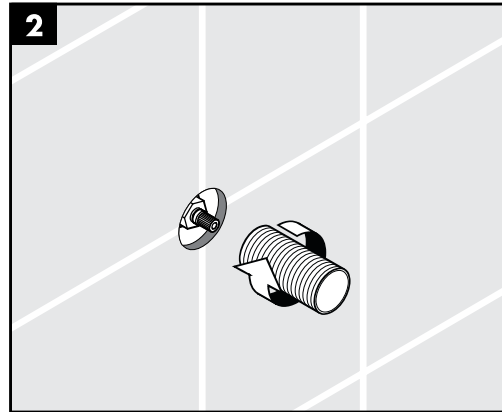
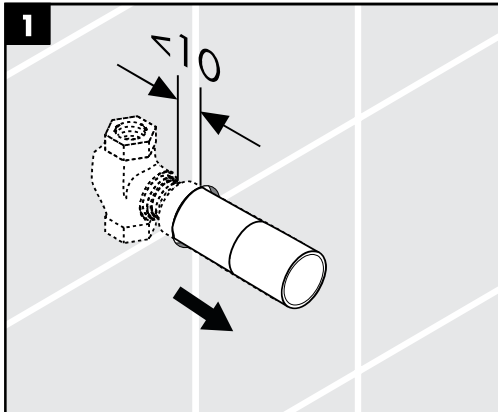
-  Gebruik geen zuurhoudende silicone!
-  **Maten** (zie blz. 20)
-  **Service onderdelen** (zie blz. 21)
  - XXX = Kleuren
  - 000 = verchromd
  - 400 = wit/verchromd

-  **Keurmerk** (zie blz. 24)
-  **Reinigen** (zie bijgevoegde brochure)



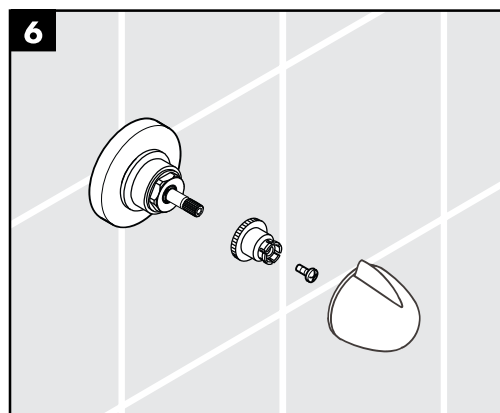
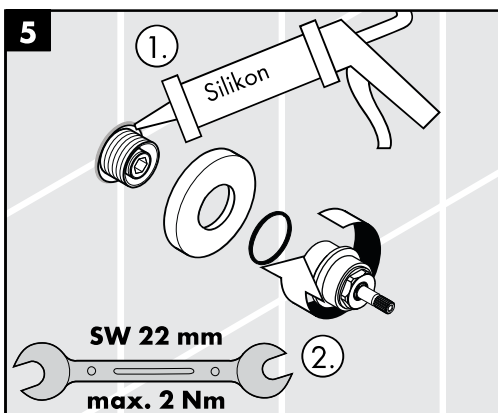
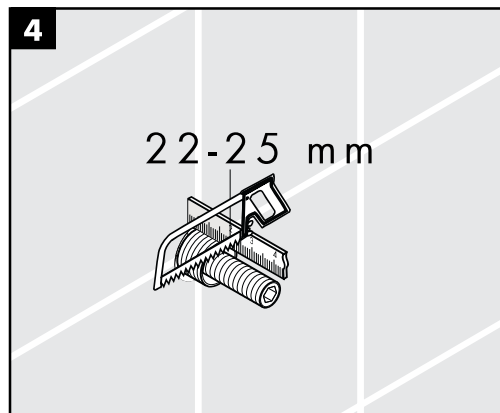
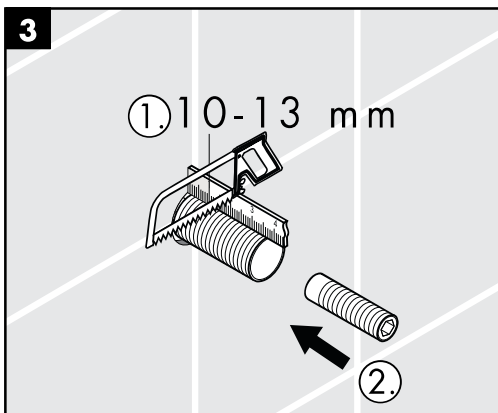
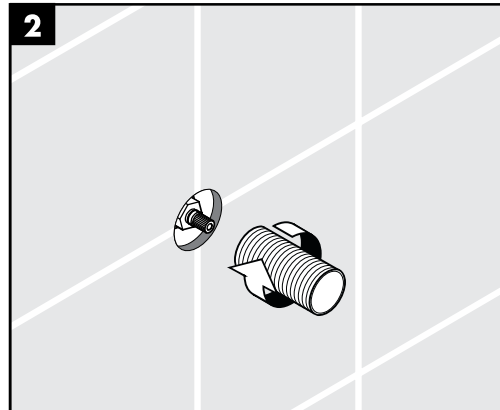
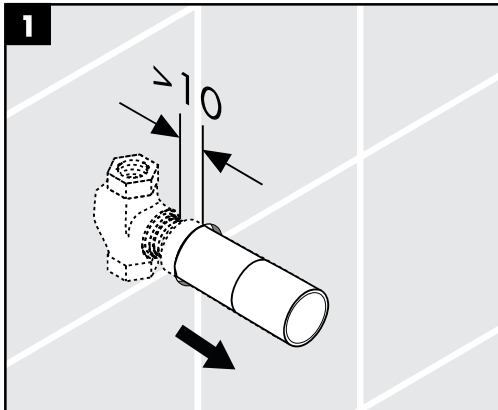


13973180 / 13974180 / 13975180  
07/92 - 04/01



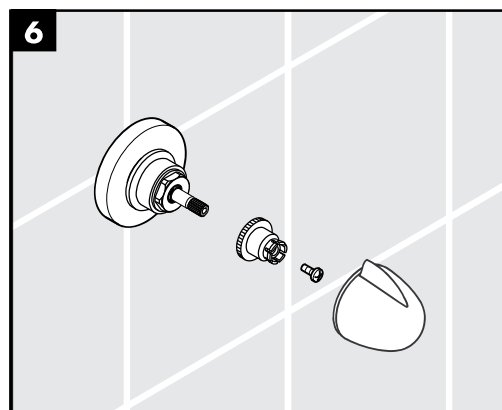
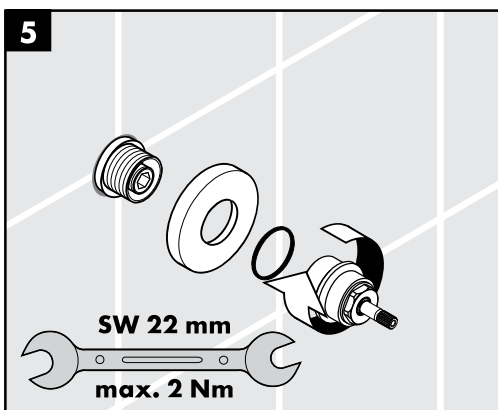
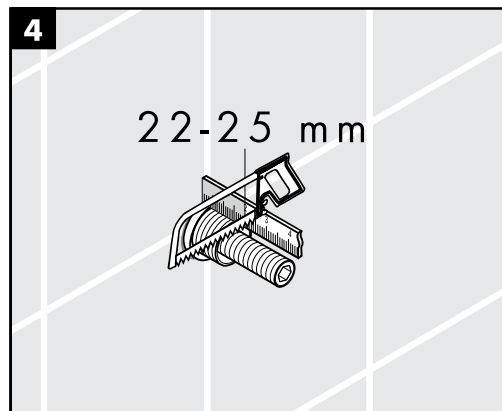
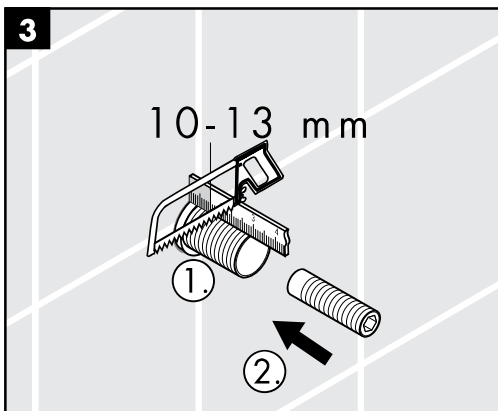
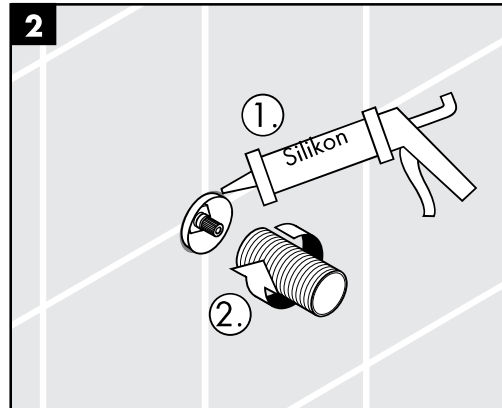
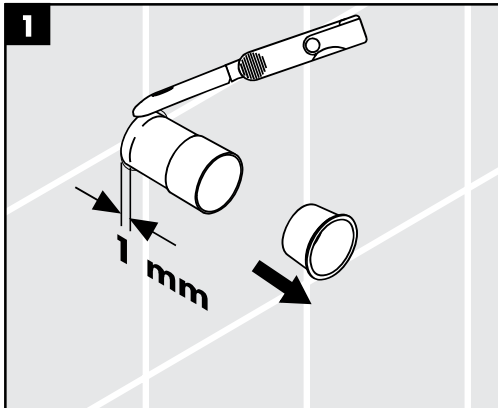


13973180 / 13974180 / 13975180  
07/92 - 04/01



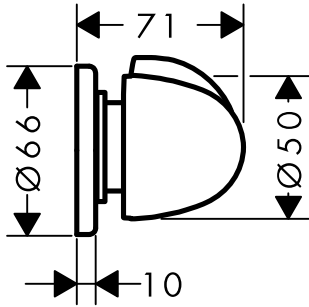


15970180 / 15973180 / 15974180  
> 05/01

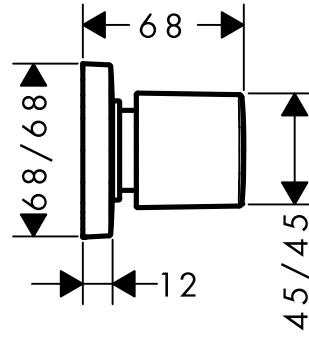




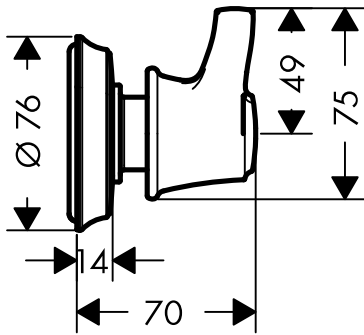
**Talis / Focus** 15971000



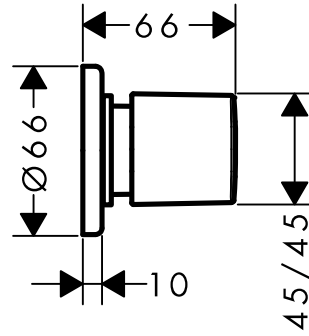
**PuraVida** 15978XXX



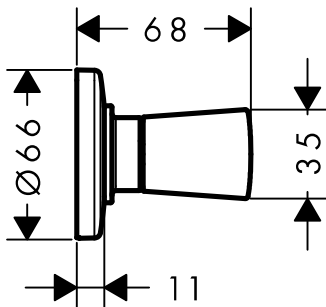
**Metris Classic / Talis Classic** 15961000



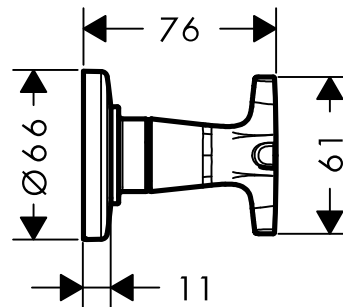
**Metris** 31677000



**Logis** 71970000

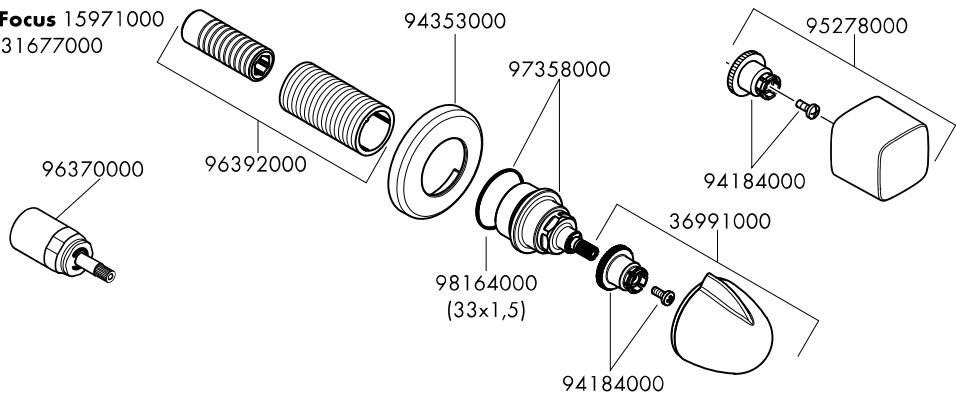


**Logis Classic** 71976000



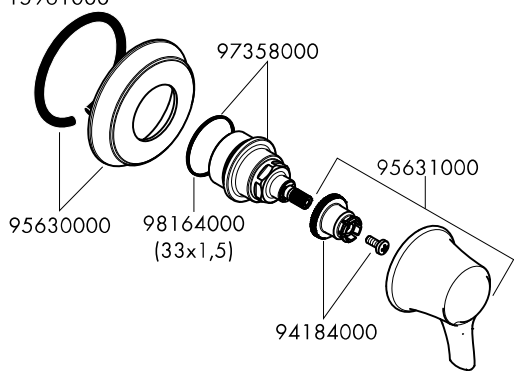
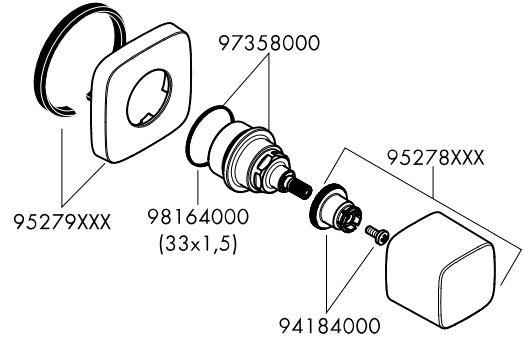


**Talis / Focus** 15971000  
**Metris** 31677000



**Metris Classic / Talis Classic**  
15961000

**PuraVida**  
15978XXX



**Logis** 71970000  
**Logis Classic** 71976000

