

# YOUNG 2.0

---



Muursteen  
*Barre de renfort*



Handgreep  
*Poignée*



Scharnieren met liftstelsysteem  
*Charnières de levage*



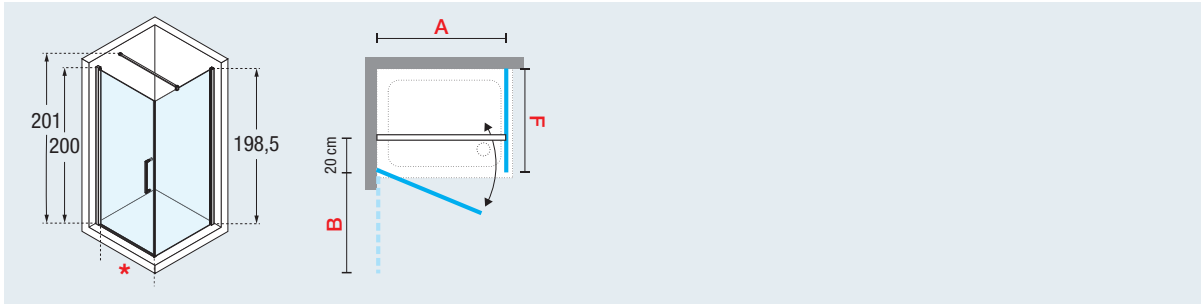
Opening naar binnen en buiten  
*Ouverture intérieure et extérieure*



# YOUNG 2.0 G+F

Draaideur + zijwand

Porte pivotante + paroi latérale



Afmetingen Dimensions (cm)			Instapruimte Passage	Code	Glassoort Vitrage			Kleuren / Prijs Couleurs / Prix				
A	B	*			1	2	4	D	B	K		
<b>DEUR / PORTE</b>							Transparent Transparent	Aqua	Satin	Wit Blanc	Matchroom Silver	Chroom Chrome
57 ↔ 59	49	48		<b>Y2G57-</b>								
59 ↔ 61	51	50		<b>Y2G59-</b>								
61 ↔ 63	53	52		<b>Y2G61-</b>								
65 ↔ 67	57	56		<b>Y2G65-</b>								
67 ↔ 69	59	58		<b>Y2G67-</b>								
69 ↔ 71	61	60		<b>Y2G69-</b>								
72 ↔ 74	64	63		<b>Y2G72-</b>								
74 ↔ 76	66	65		<b>Y2G74-</b>								
77 ↔ 79	69	68		<b>Y2G77-</b>								
79 ↔ 81	71	70		<b>Y2G79-</b>								
85 ↔ 87	77	76		<b>Y2G85-</b>								
87 ↔ 89	79	78		<b>Y2G87-</b>								
89 ↔ 91	81	80		<b>Y2G89-</b>								
95 ↔ 97	87	86		<b>Y2G95-</b>								
97 ↔ 99	89	88		<b>Y2G97-</b>								
99 ↔ 101	91	90		<b>Y2G99-</b>								
H 140 ↓ 200	L 57 ↔ 99		SPECIAL	<b>Y2GSP</b>								

<b>ZIJWAND / PAROI LATÉRALE</b>				Glassoort Vitrage			Kleuren / Prijs Couleurs / Prix		
F				1	2	4	D	B	K
57 ↔ 59	-	-		<b>Y2FG57-</b>					
59 ↔ 61	-	-		<b>Y2FG59-</b>					
61 ↔ 63	-	-		<b>Y2FG61-</b>					
65 ↔ 67	-	-		<b>Y2FG65-</b>					
67 ↔ 69	-	-		<b>Y2FG67-</b>					
69 ↔ 71	-	-		<b>Y2FG69-</b>					
73 ↔ 75	-	-		<b>Y2FG73-</b>					
75 ↔ 77	-	-		<b>Y2FG75-</b>					
77 ↔ 79	-	-		<b>Y2FG77-</b>					
79 ↔ 81	-	-		<b>Y2FG79-</b>					
85 ↔ 87	-	-		<b>Y2FG85-</b>					
87 ↔ 89	-	-		<b>Y2FG87-</b>					
89 ↔ 91	-	-		<b>Y2FG89-</b>					
95 ↔ 97	-	-		<b>Y2FG95-</b>					
97 ↔ 99	-	-		<b>Y2FG97-</b>					
99 ↔ 101	-	-		<b>Y2FG99-</b>					
117 ↔ 119	-	-		<b>Y2FG117-</b>					
119 ↔ 121	-	-		<b>Y2FG119-</b>					
H 140 ↓ 200	L 20 ↔ 120		SPECIAL	<b>Y2FGSP</b>					

VOORBEELD PRODUCTCODE:  
EXEMPLE CODE PRODUIT:

Y2G57-1D

=

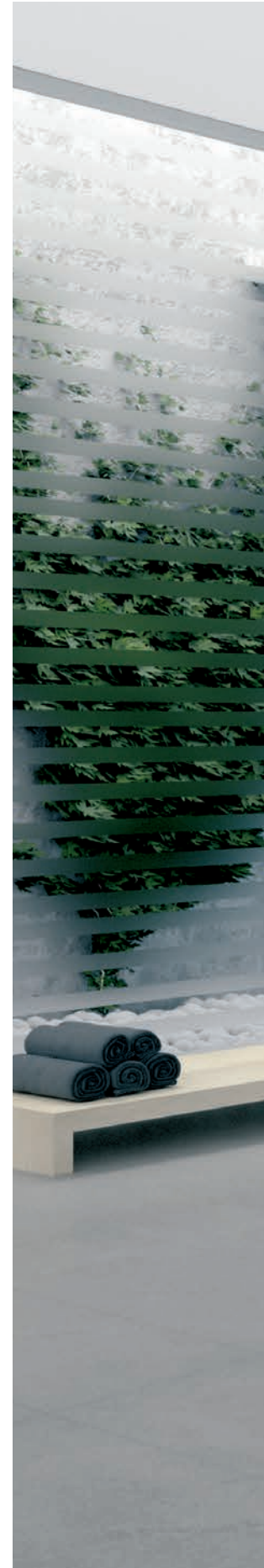
Y2G57-

+

1

+

D





200 cm



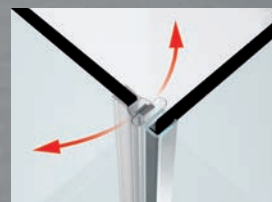
6 mm



2 cm



p. 29



OPENING NAAR BINNEN-BUITEN  
OUVERTURE INTERIEURE-EXTERIEURE

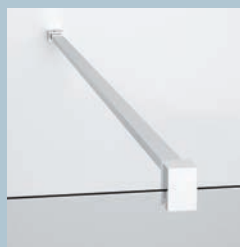


## OPTIONEEL / OPTIONS



**Muursteen chroom**  
*Barre de renfort chrome*

Afmetingen <i>Dimensions</i>	Code	Prijs <i>Prix</i>
15 cm	<b>R80LOU150-K</b>	
25 cm	<b>R80LOU250-K</b>	
35 cm	<b>R80LOU350-K</b>	
45 cm	<b>R80LOU450-K</b>	



**Muursteen 150 cm**  
*Barre de renfort 150 cm*

Afwerking <i>Finition</i>	Code	Prijs <i>Prix</i>
Wit / <i>Blanc</i>	<b>R80Y215-D</b>	
Matchroom / <i>Silver</i>	<b>R80Y215-B</b>	
Chroom / <i>Chrome</i>	<b>R80Y215-K</b>	

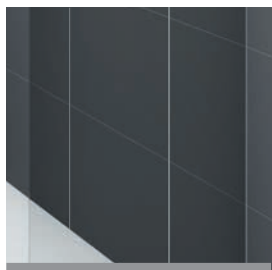


**Draibare muursteen 100 cm**  
*Barre orientable 100 cm*

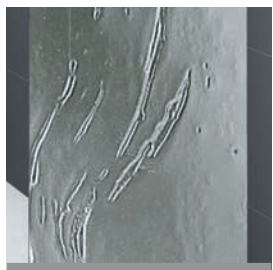
Afwerking <i>Finition</i>	Code	Prijs <i>Prix</i>
Wit / <i>Blanc</i>	<b>R80KUOR100-D</b>	
Matchroom / <i>Silver</i>	<b>R80KUOR100-B</b>	
Chroom / <i>Chrome</i>	<b>R80KUOR100-K</b>	

## AFWERKING / FINITIONS

### GLASSOORTEN / VERRES



Transparant  
Transparent  
COD. 1



Aqua  
COD. 2

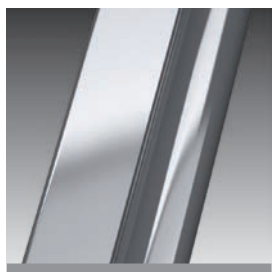


Satin  
COD. 4

### PROFIELKLEUREN / FINITIONS



Wit  
Blanc  
COD. D



Matchroom  
Silver  
COD. B



Chroom  
Chrome  
COD. K

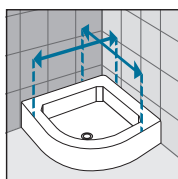
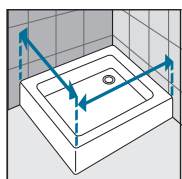


### HANDGREEP / POIGNEE

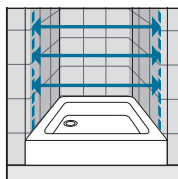


Handgrip chroom  
Poignée chrome

### OPNEMEN VAN DE MATEN / RELEVER LES MESURES



De maten opnemen van muur tot de **buitenrand** van de douchebak.  
*Prendre les mesures du mur au bord **extérieur** du receveur de douche.*



De maten opnemen van muur tot muur (boven, in het midden en beneden) waarna u de kleinste maat aanhoudt.  
*Prendre les mesures d'un mur à l'autre, en bas, en haut et au milieu et choisir la mesure inférieure.*