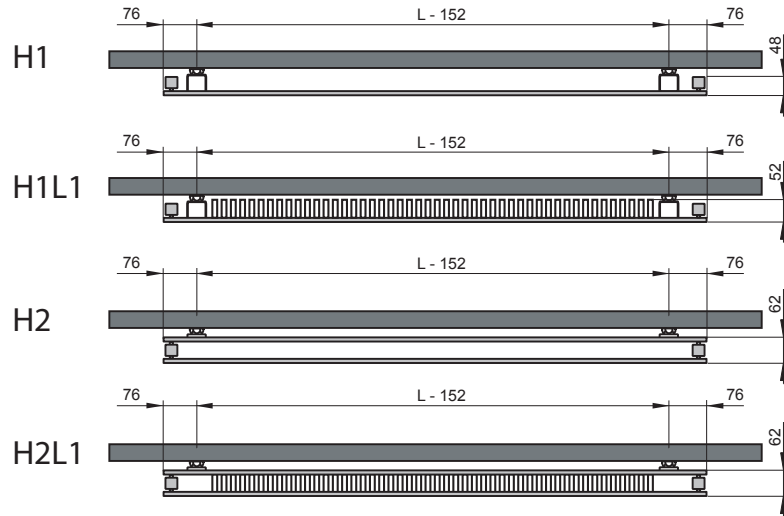


# MONTAGEVOORSCHRIFT MONTAGE - ANLEITUNG

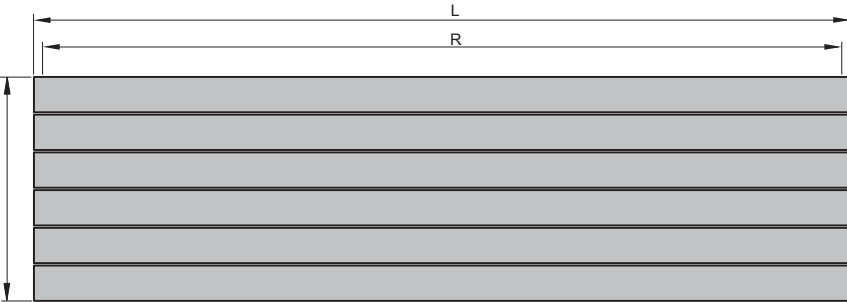
# INSTRUCTIONS DE MONTAGE MOUNTING INSTRUCTIONS

# H / HP

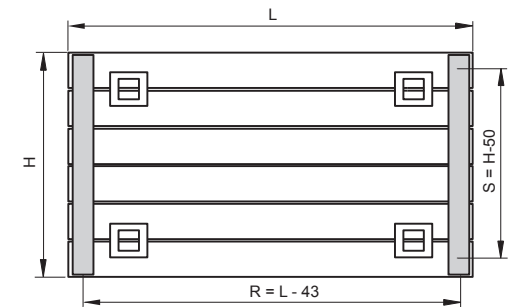
Bovenaanzicht



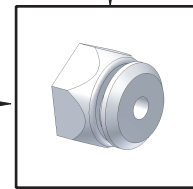
Ophanging (6x) (2500 t.e.m. 3000)  
 Fixation Murale (6x) (2500 t.e.m. 3000)  
 Wandbefestigung (6x) (2500 t.e.m. 3000)  
 Wall - support (6x) (2500 t.e.m. 3000)



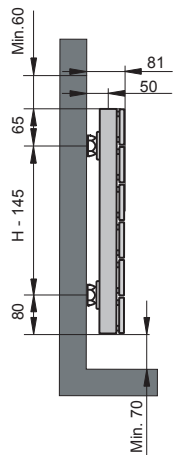
Achteraanzicht



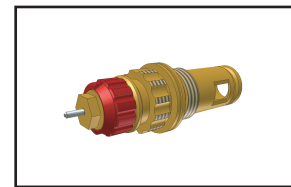
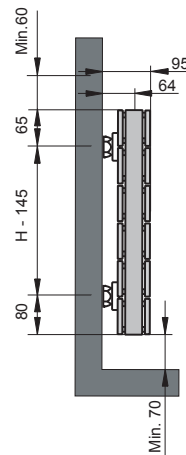
Ophanging (4x) (500 t.e.m. 2400)  
 Fixation Murale (4x) (500 t.e.m. 2400)  
 Wandbefestigung (4x) (500 t.e.m. 2400)  
 Wall - support (4x) (500 t.e.m. 2400)



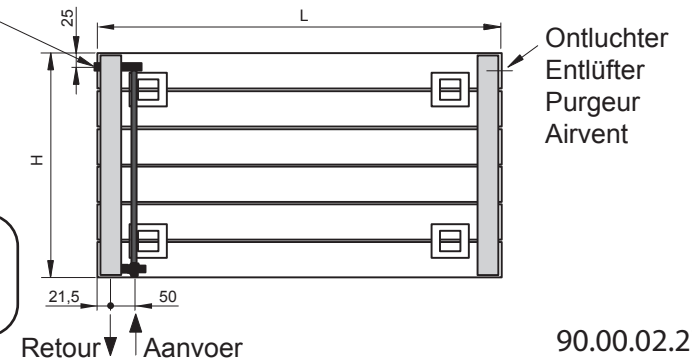
H1(L1)



H2(L1)



Ventielradiator



Werkdruk : Max. 4 bar  
 Betriebsdruck : Max. 4 bar  
 Pression de service : Max. 4 bar  
 Operating pressure : Max. 4 bar