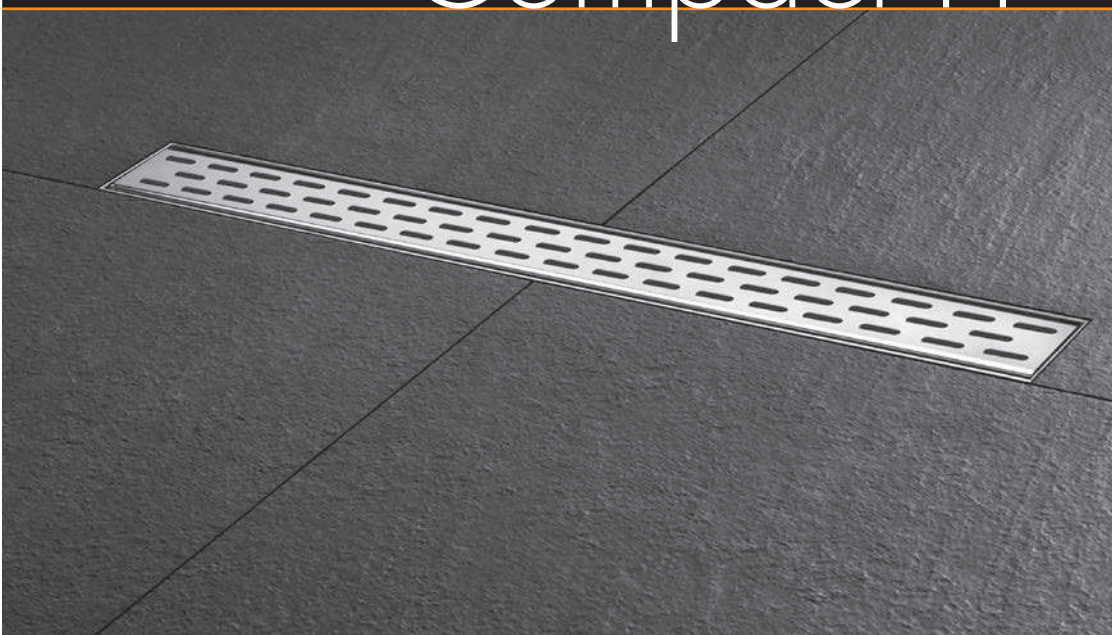


Easy Drain®

Compact FF



UK	INSTALLATION ADVICE
DE	Einbauempfehlung
NL	Inbouwadvies
DK	Montagevejledning
NO	Innbyggingsråd
ES	Consejo para la instalación
PT	Conselho de instalação
IT	Consigli di montaggio
FR	Conseils de montage
PL	Zalecenia dotyczące wbudowania

UK Contents
DE Inhalt
NL Inhoud
DK Indhold
NO Innhold

ES Contenido
PT Conteúdo
IT Contenuto
FR Table des matières
PL Zawartość

Installation options	3
Height adjustable support	4
Installation guide	5
Sealing advice	7
Maintenance instructions	8
Siphon cleaning	9
Important assembling advice	10

Compact FF

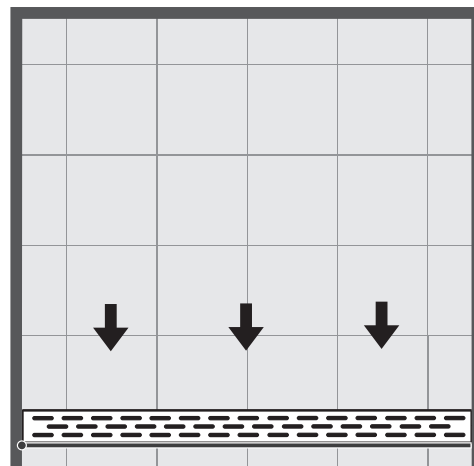
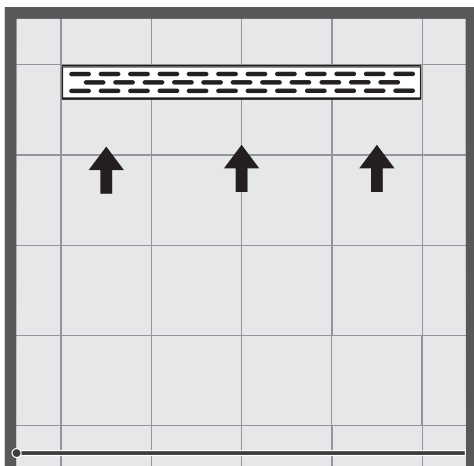
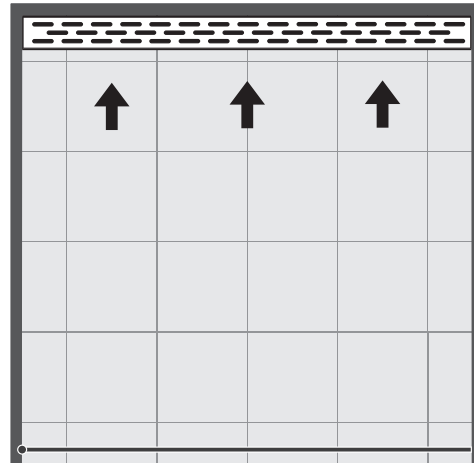
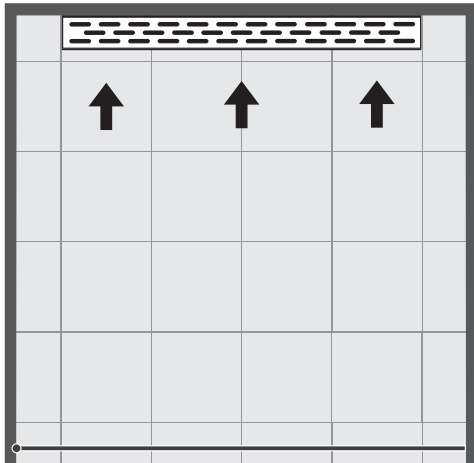


Compact FF TILE



UK Installation options
DE Einbaumöglichkeiten
NL Inbouwvarianten
DK Installeringsvarianter
NO Innbyggingsvarianter

ES Opciones de instalación
PT Variantes de instalação
IT Varianti di montaggio
FR Variantes de montage
PL Warianty wmontowania



UK Height adjustable support

DE Stellfuß Montage

NL Stelvoet montage

DK Justering fod montering

NO Justeringsfot montering

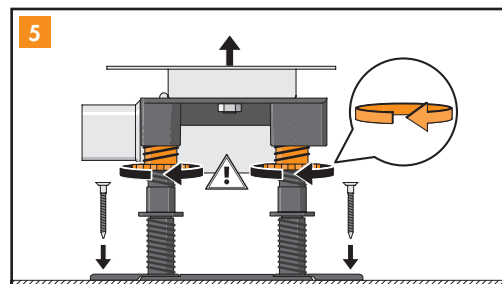
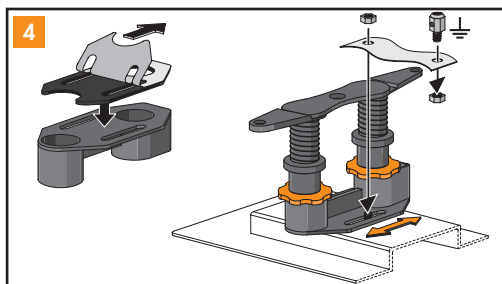
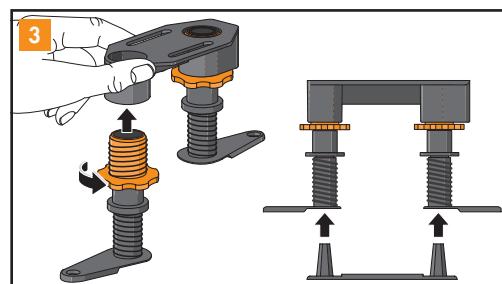
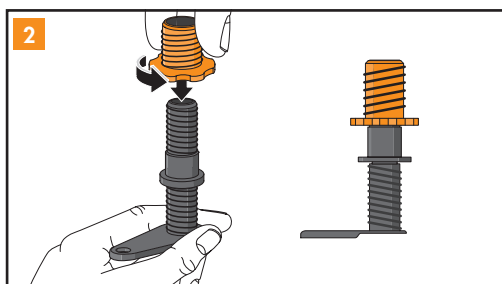
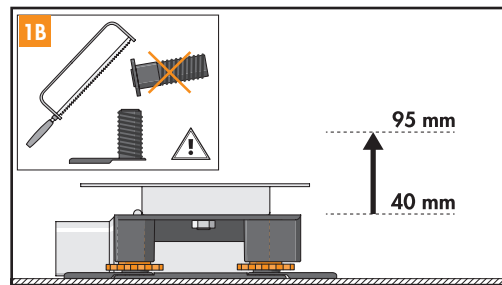
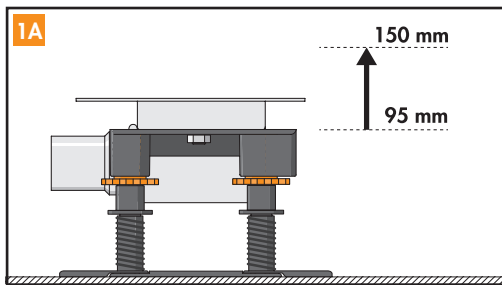
ES Montaje del pie de ajuste

PT Montagem do pé nivelador

IT Montaggio del piede di regolazione

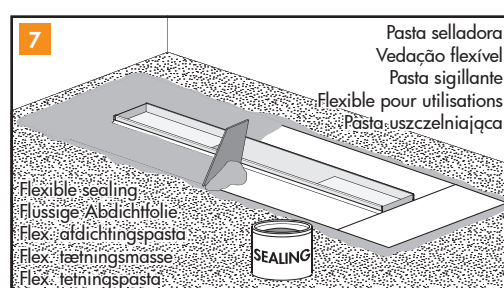
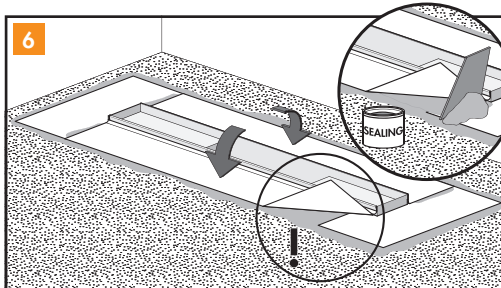
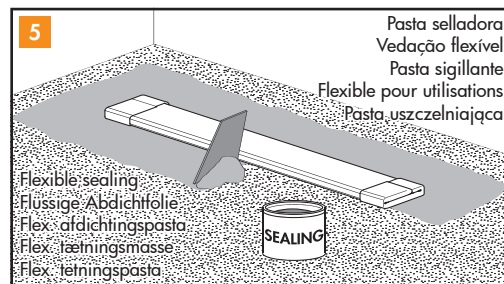
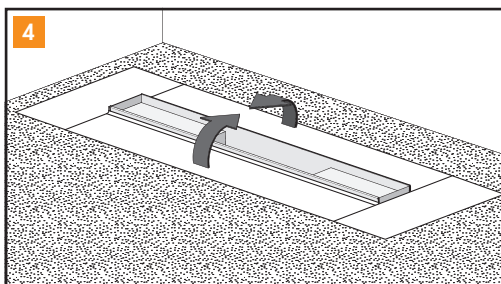
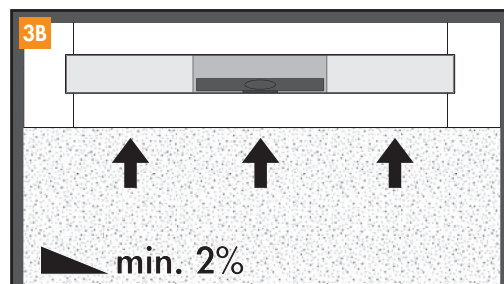
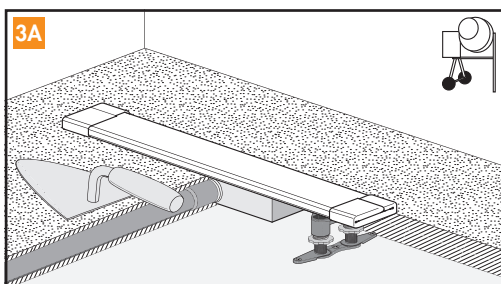
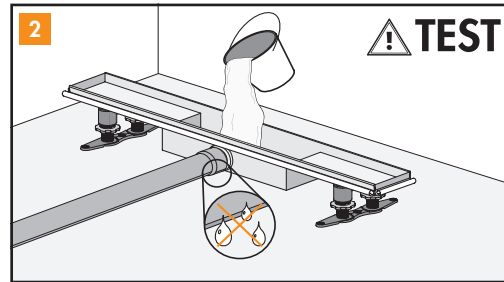
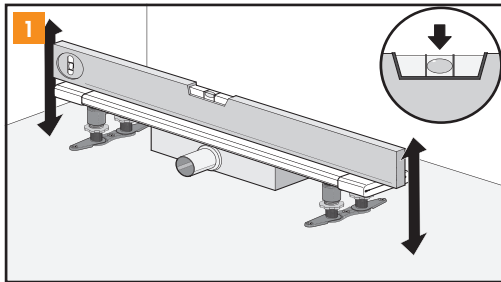
FR Socle de montage ajustable

PL Montaż na regulowanej stopce

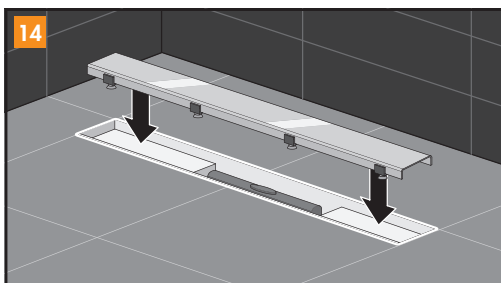
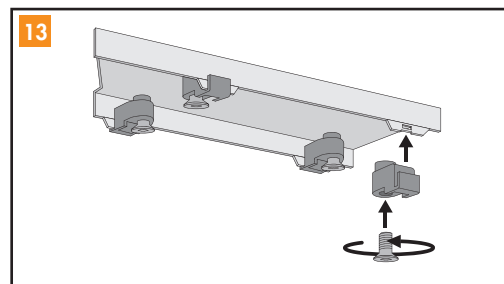
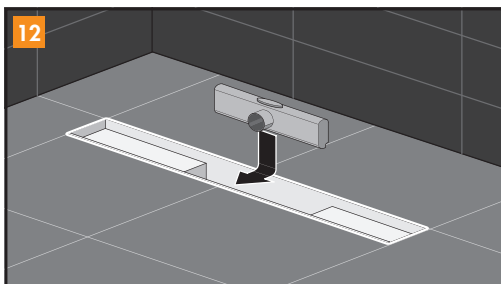
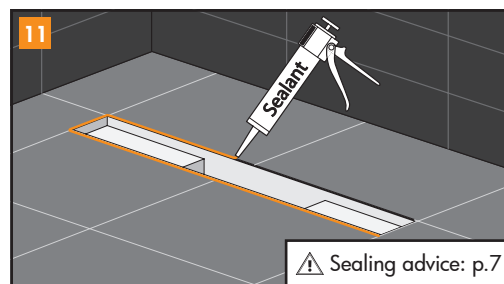
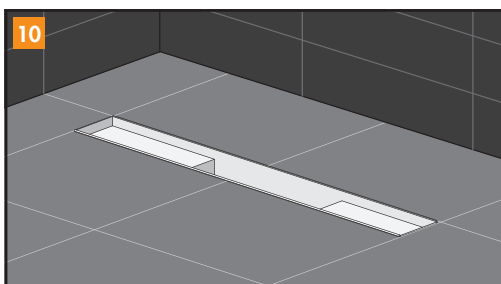
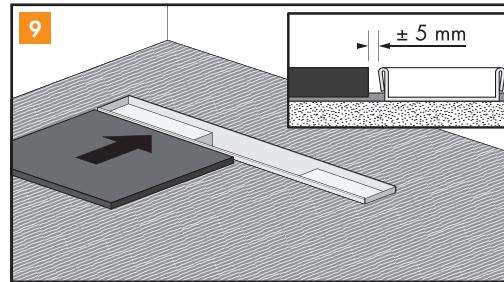
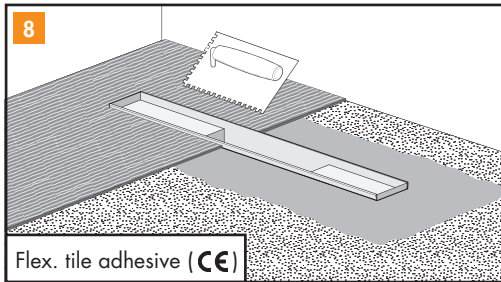


UK Installation guide
 DE Einbauempfehlung
 NL Inbouwhandleiding
 DK Montagevejledning
 NO Innbyggingsveiledning

ES Manual de instalación
 PT Instruções de instalação
 IT Istruzioni di montaggio
 FR Explications de montage
 PL Instrukcja wmontowania



Easy Drain®

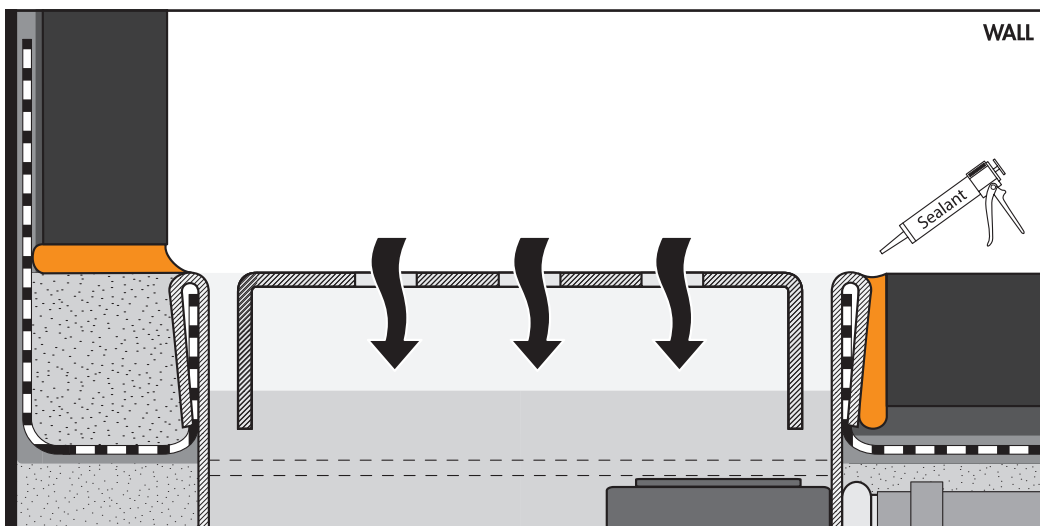
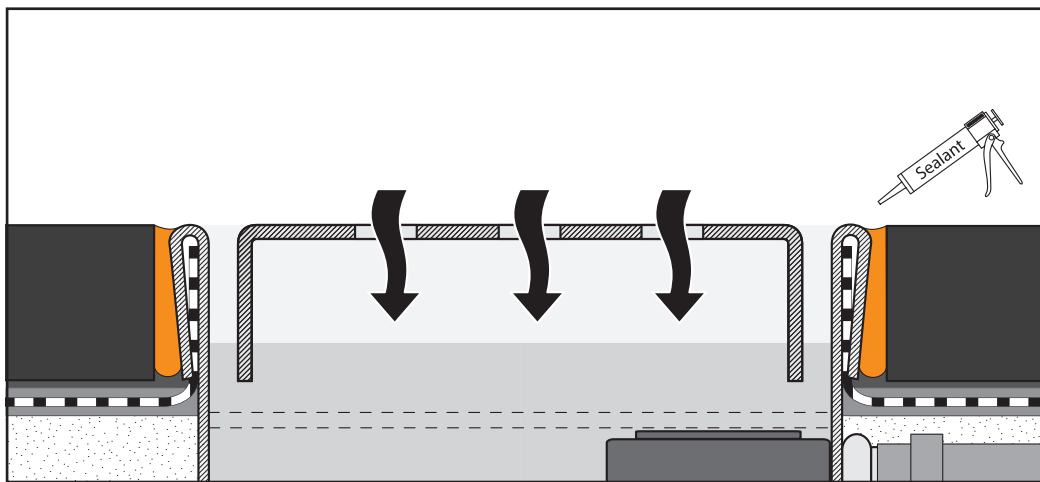


UK Sealing advice
DE Abdichtungsempfehlung
NL Afdichtingsadvies
DK Tætningsråd
NO Tetningsråd

ES Consejo de sellado
PT Conselho de vedação
IT Consigli per la sigillatura
FR Conseil pour étanchéifier
PL Zalecenia dotyczące uszczelniania

UK Only primary drainage
DE Nur Primärwasser Ableitung
NL Alleen primaire afwatering
DK Kun afledning af primærvand
NO Kun primær avløp

ES Sólo desagüe de agua primario
PT Só drenagem da água primária
IT Solo derivazione primario scarico
FR Seule évacuation primaire
PL Podstawowy systemu odpływowego



UK Maintenance instructions
DE Pflegehinweise
NL Onderhoudsadviezen
DK Vedligeholdelsesinstruktioner
NO Vedlikeholdsinstruks

ES Instrucciones de mantenimiento
PT Instruções de manutenção
IT Istruzioni di manutenzione
FR Instructions d'entretien
PL Instrukcja konserwacji

- UK**
- Do not use abrasives and/or sharp/scraping objects to clean the Easy Drain® Compact.
 - The siphon trap should be cleaned periodically to remove any dirt that may have collected.
 - We recommend the use of Easy CLEANSET for daily maintenance and cleaning of your Easy Drain® Compact.
- DE**
- Reinigen Sie den Easy Drain® Compact ohne Scheuermittel und/oder spitze oder scheuernde Gegenstände.
 - Befreien Sie den Geruchsverschluss in regelmäßigen Abständen von eventuellen Verschmutzungen.
 - Wir empfehlen die Verwendung von Easy CLEANSET für die tägliche Reinigung und Pflege Ihrer Easy Drain® Compact.
- NL**
- De Easy Drain® Compact reinigen zonder schuurmiddelen en/of scherpe of schurende voorwerpen.
 - Periodiek het stankslot vrij maken van eventuele vervuilingen.
 - Wij raden het gebruik van Easy CLEANSET aan voor dagelijks onderhoud en intensieve reiniging van uw Easy Drain® Compact.
- DK**
- Rengøring af Easy Drain® Compact skal ske med rengøringsmidler uden slibemiddel, såvel som brugen af spidse eller slibende rengøringsremedier frarådes.
 - Vandlåsen rengøres med jævne mellemrum efter behov.
 - Vi anbefaler anvendelsen af Easy CLEANSET til den daglige rengøring og pleje af Deres Easy Drain® Compact
- NO**
- Rengjør Easy Drain® Compact uten skuremidler og/eller skarpe eller skurende gjenstander.
 - Rengjør med jevne mellomrom vannlåsen for eventuelle forurensninger.
 - Vi anbefaler bruken av Easy CLEANSET for daglig vedlikehold og intensiv rengjøring av din Easy Drain® Compact.
- ES**
- Limpiar el Easy Drain® Compact sin utilizar productos corrosivos y/o materiales abrasivos.
 - Limpiar periódicamente los posibles residuos del cierre hidráulico.
 - Se recomienda el uso de CLEANSET para el mantenimiento diario y limpieza intensiva de su Easy Drain® Compact.
- PT**
- A Easy Drain® Compact não deve ser limpa com produtos abrasivos e/ou objectos afiados ou abrasivos.
 - Periodicamente libertar o sifão de retenção de odores de eventuais sujidades .
 - Recomendamos a utilização do kit de limpeza Easy CLEANSET para a manutenção diária e a limpeza intensiva da sua Easy Drain® Compact.
- IT**
- Pulire la Easy Drain® Compact senza utilizzare sostanze abrasive e/o oggetti taglienti o abrasivi.
 - Eliminare periodicamente le eventuali contaminazioni dal sifone antiodore.
 - Consigliamo di utilizzare Easy CLEANSET per la manutenzione giornaliera e la pulizia approfondita della Easy Drain® Compact.
- FR**
- N'utilisez pas de produit abrasifs ni d'objets coupants ou abrasifs pour le nettoyage du Easy Drain® Compact.
 - Éliminez périodiquement les dépôts éventuels au niveau du coupe-odeur.
 - Nous conseillons d'utiliser Easy CLEANSET pour la maintenance quotidienne et le nettoyage intensif du Easy Drain® Compact.
- PL**
- Easy Drain® Compact czyścić bez użycia materiałów ściernych i/lub ostrych albo szorstkich przedmiotów.
 - Okresowo należy usuwać ewentualne zanieczyszczenia z syfonu kanalizacyjnego.
 - Zalecamy korzystanie z Easy CLEANSET do codziennych zabiegów pielęgnacyjnych oraz intensywnego czyszczenia Easy Drain® Compact.

UK Siphon cleaning
DE Siphon Reinigung
NL Sifon reiniging
DK Rengøring af vandlås
NO Vannlåsrensing

ES Limpieza sifon
PT Limpeza do sifão
IT Pulizia del sifone
FR Nettoyage du siphon
PL Czyszczenie syfonu

