



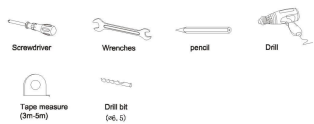
Intallation Guide GUIDE D'INSTALLATION

Shower Panel

Technical Data

Maximum operating pressure:	0.86Mpa
Recommend pressure:	0.35-0.55Mpa
Max.hot water temperature:	80°C
Recommend hot water temperature:	49-72°C

Recommended Tools for Installation:

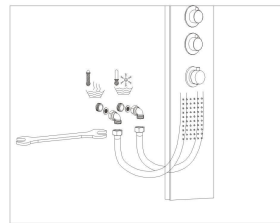


Replacement Parts:

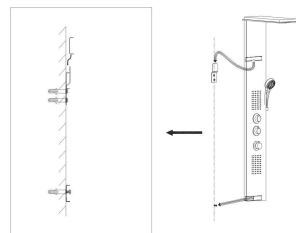
1. Shower Panel Body	1PC
2. Head Shower	1PC
3. Head Shower Cover	1PC
4. Stainless Steel clasper	1PC
5. Stainless Steel Screw	4PCS
6. Stainless Steel Washer	9PCS
7. Stainless Steel Nut	4PCS
8. Hand Shower Holder Assembly	1SET
9. Rubber Washer	2PCS
10. Shower Hose	1PC
11. Hand Shower	1PC
12. Positioning and Support Brackets	1PC
13. Plastic Screw	3PCS
14. Self-tapping Screw	3PCS

1

2. Connect the hot water and cold water hoses behind the shower panel to the hot/cold pipes by a wrench. Left hose is for hot water and right hose is for cold water.



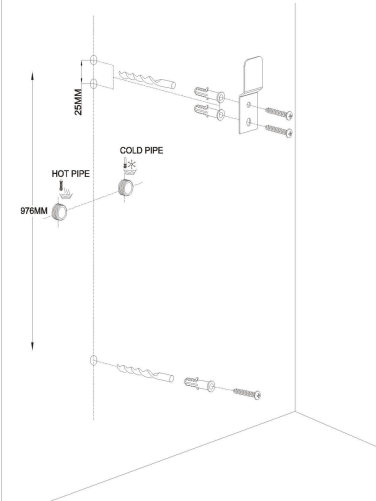
3. Make sure the Positioning & Support Bracket is properly installed on the wall. Mount the shower panel positioning bar to the Positioning & Support Bracket and below screw properly.



6

Preparing the proper position for your shower panel

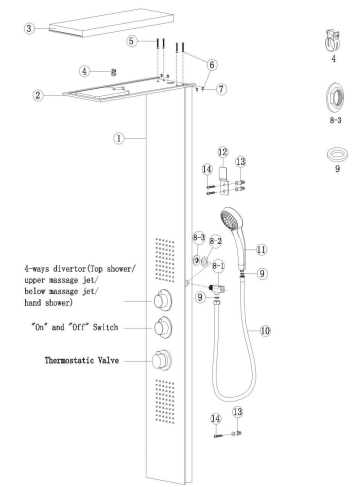
1. Using your Body Height(BH) as a basis for determining the position of your shower panel, take your body height in mm (Referred to as"BH"). Use the drawing to measure in order to determine correct drilling to install the Positioning and Support Bracket.



5

Parts Identification:

In order to make identifying all parts and components of the shower panel easily and accurately, we have provided each part with a numeric code. Please make use of this code to reference parts and in the event you need to have a part replaced or ordered.



4-way diverter (Up shower/
upper massage jet/
below massage jet/
hand shower)

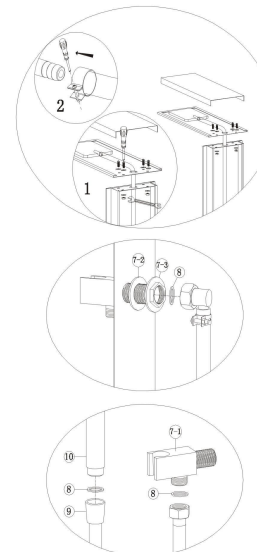
"On" and "Off" Switch

Thermostatic Valve

2

Basic Set Up:

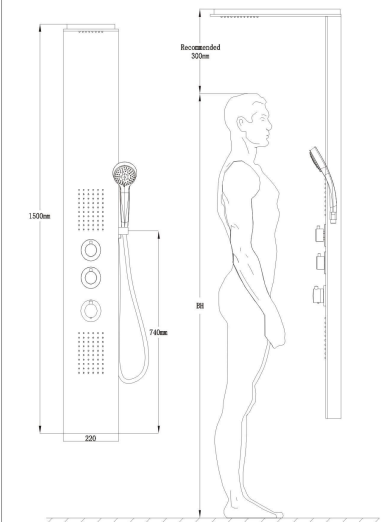
Below is a visual step-by-step sequence of how to put the shower panel's main components together



3

Positioning the panel using user's height

Depending on your height, we recommended the shower head to be positioned approx.300mm above your head. If you have several persons in your home who will use this shower panel, measure the height of the tallest person and position the shower head 300mm over that height.



4