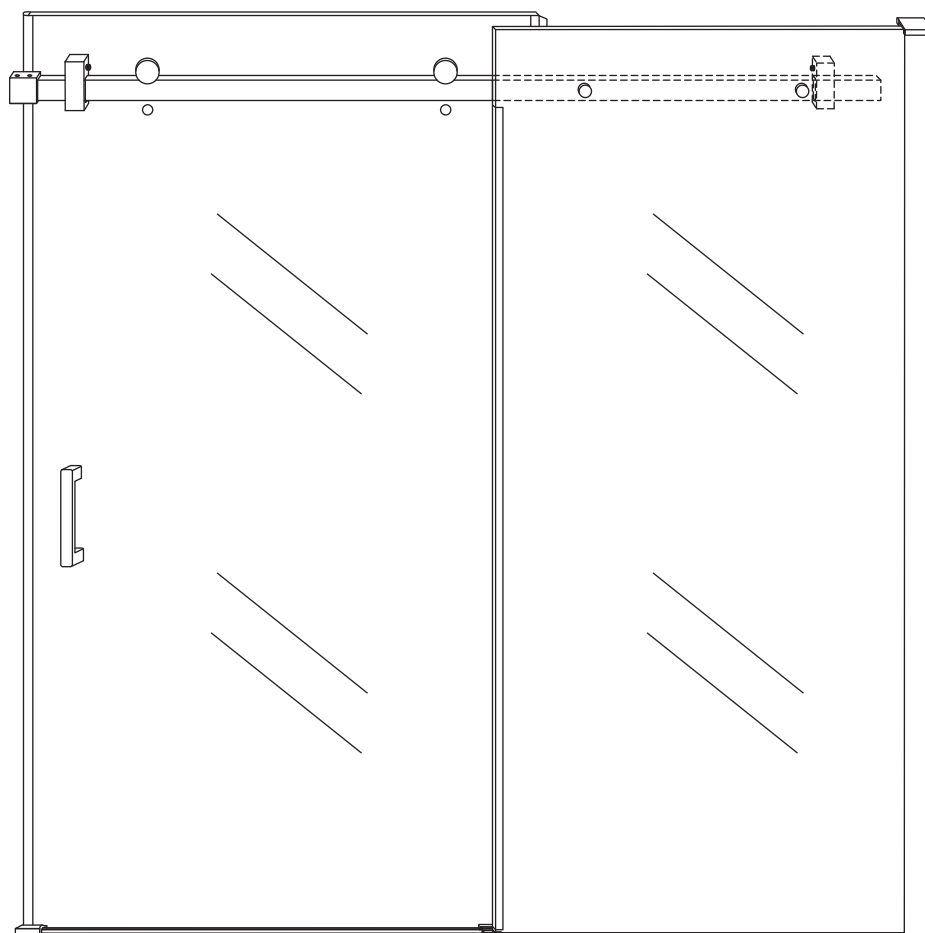
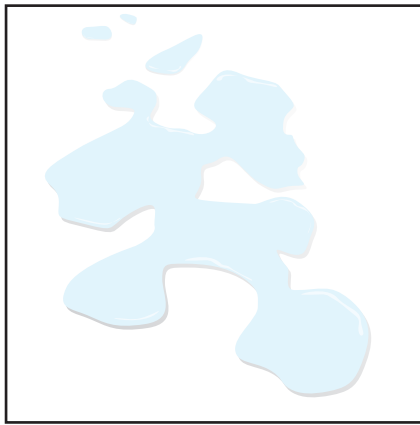


INSTALLATIE VOORSCHRIFT

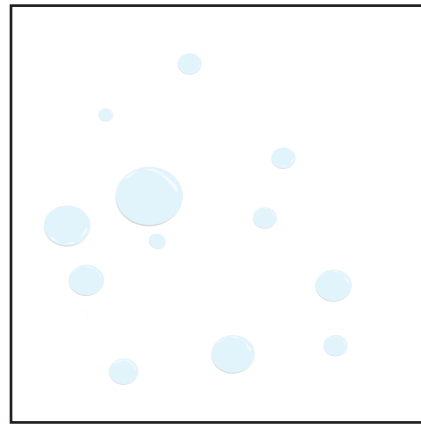
DOUCHEDEUR IN NIS met NANO behandeld glas

1700x2000mm
(1700-1720) x2000mm





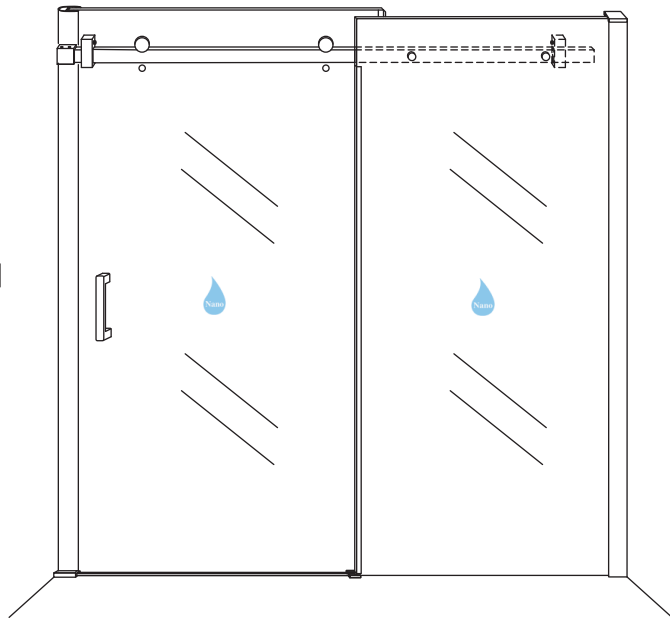
Zonder NANO



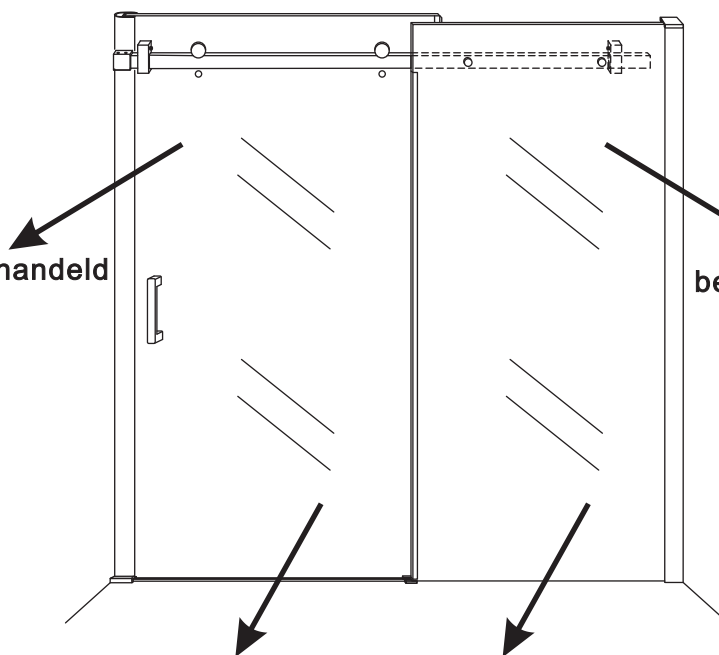
NANO



beide zijden NANO behandeld



beide zijden NANO behandeld



beide zijden NANO behandeld

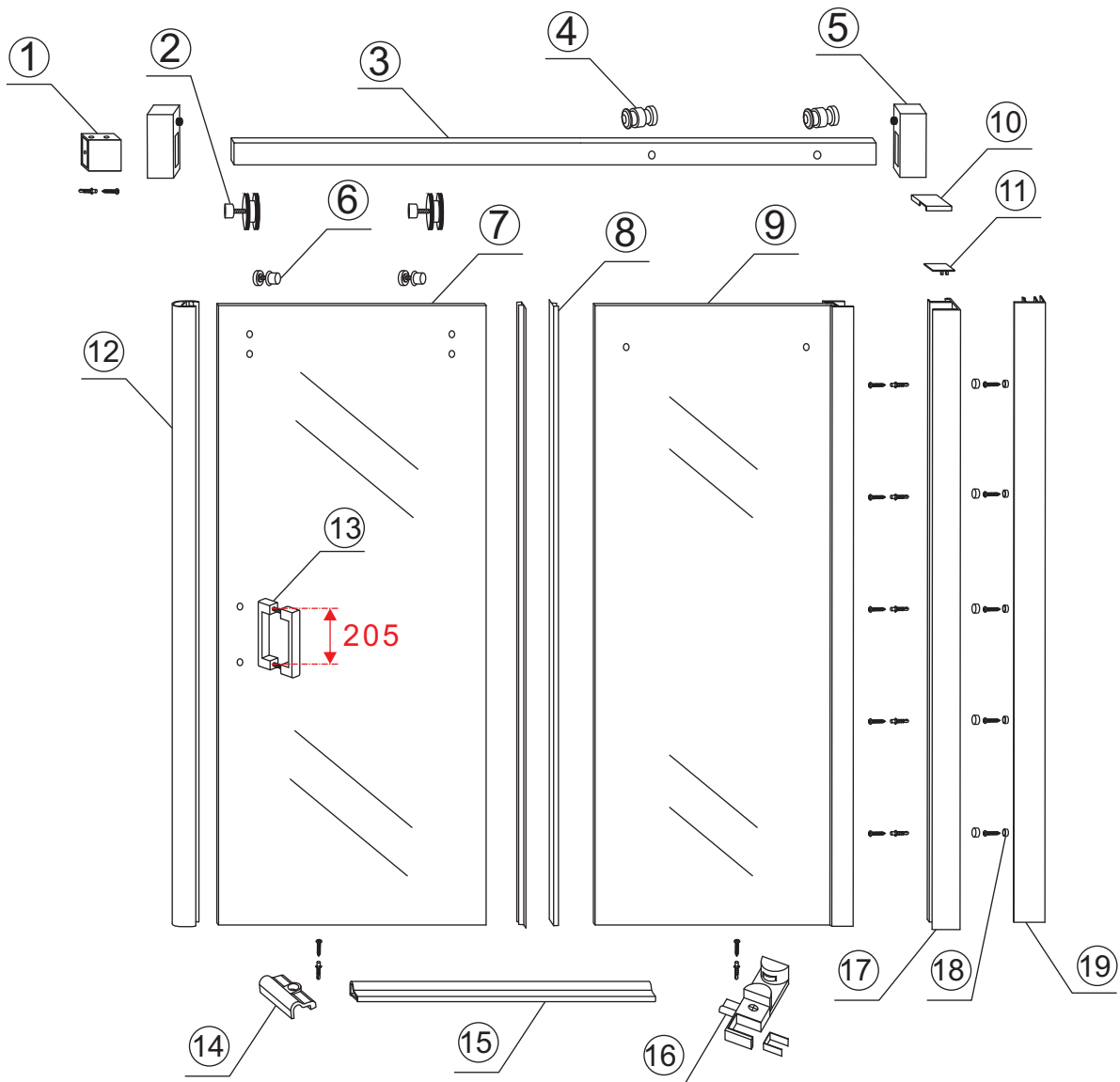
NANO garantie: 2 jaar bij normaal gebruik

LET OP: gebruik geen grove scherpe voorwerpen, zoals schuursponsjes of staalwol om het glas schoon te maken.



1

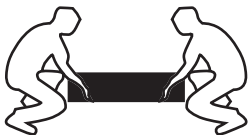
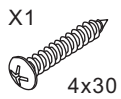
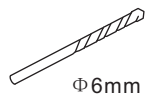
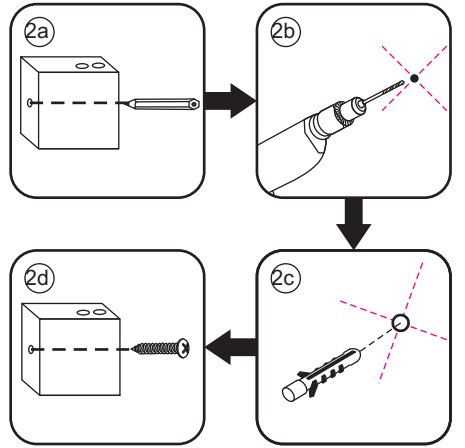
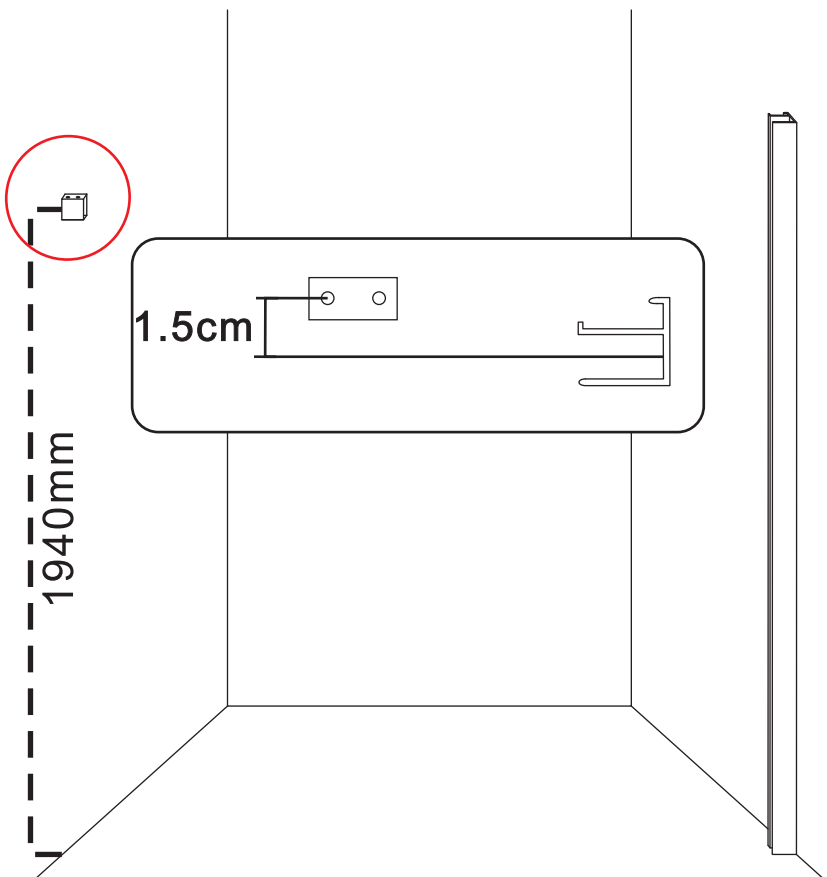
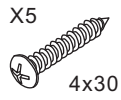
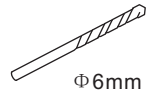
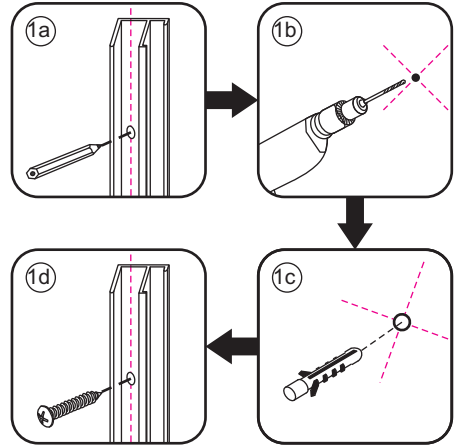
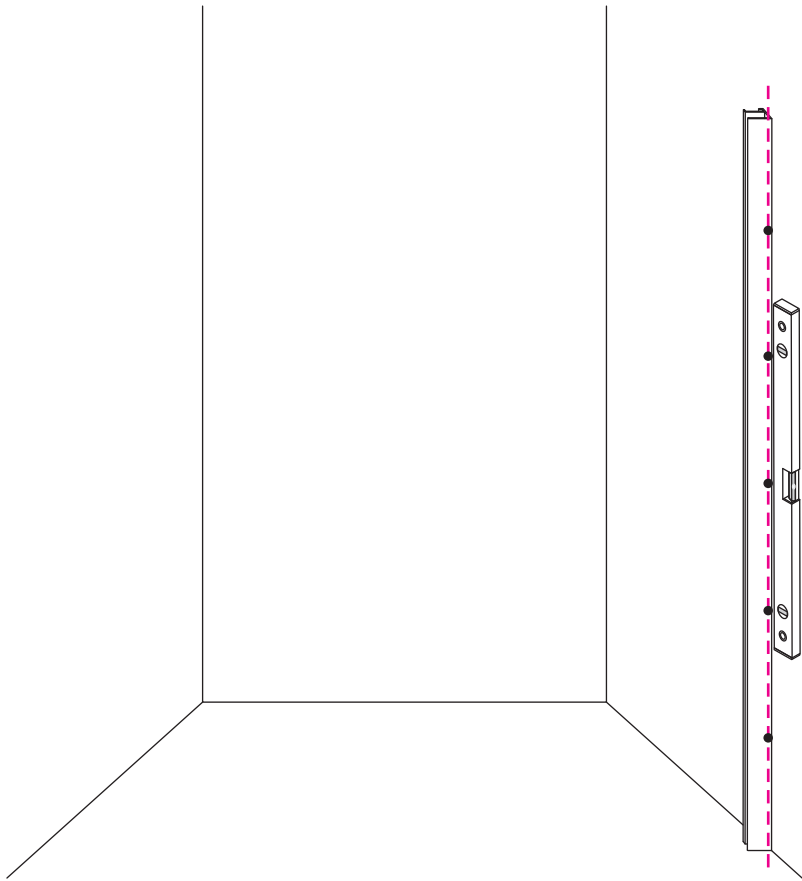


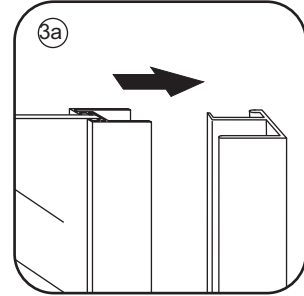
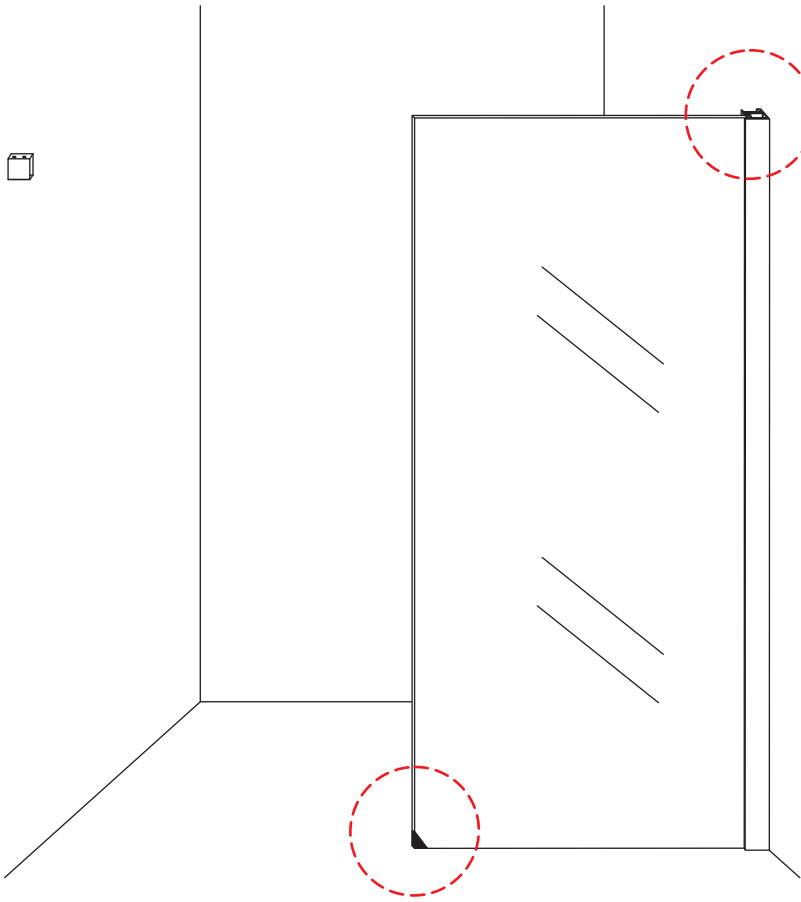


① X1	② X2	③ X1	④ X2	⑤ X2	⑥ X2	⑦ X1
⑧ X2	⑨ X1	⑩ X1	⑪ X1	⑫ X1	⑬ X1	⑭ X1
⑮ X1	⑯ X1	⑰ X1	⑱ X5	⑲ X1	X13	X8

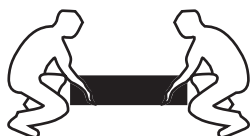
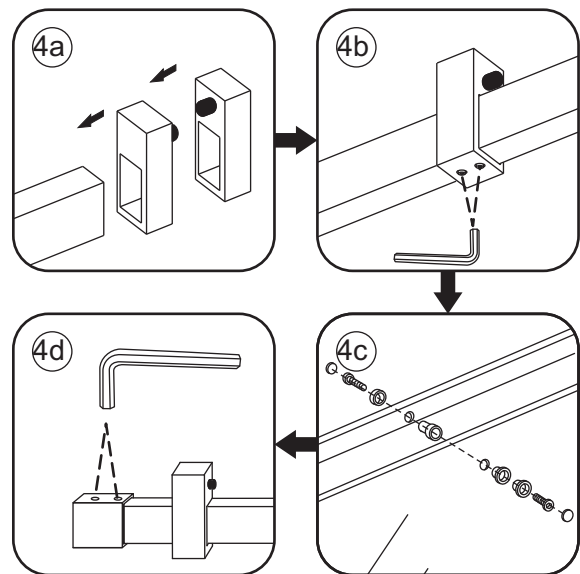
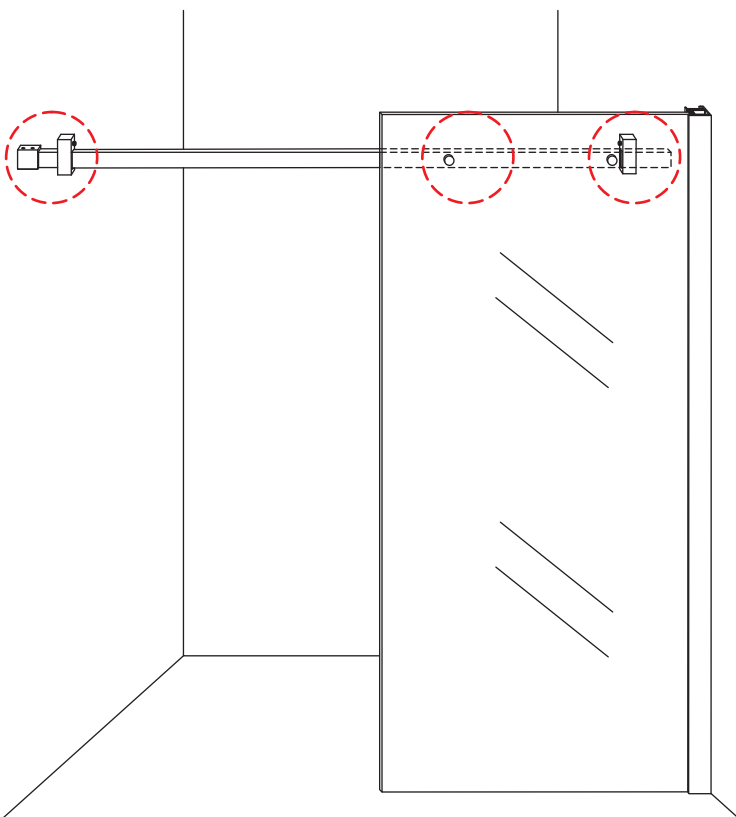


3

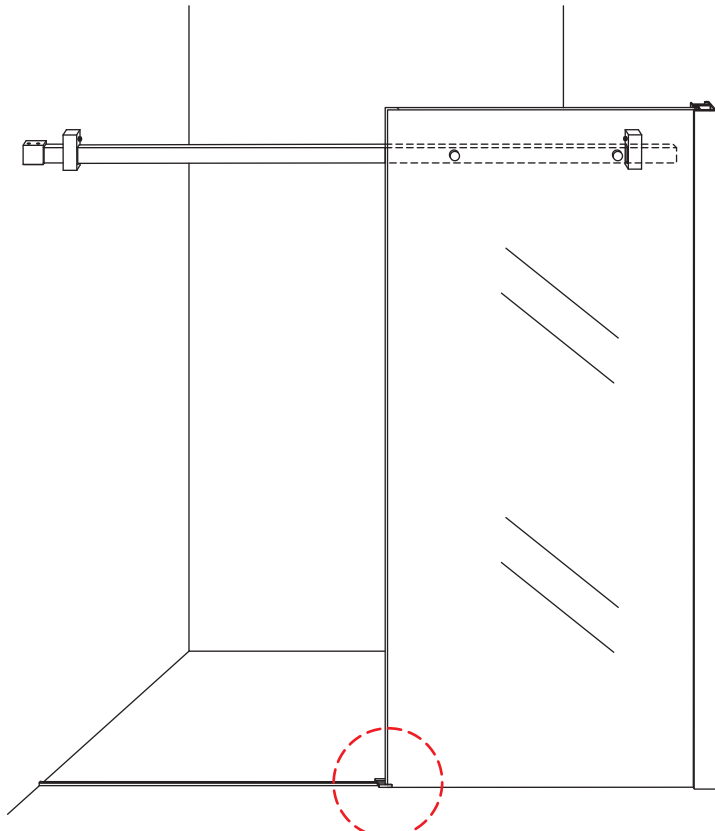




 **Verwijder de zwarte hoekbeschermers pas als de cabine helemaal is geïnstalleerd!**



5



5a: Marking the top edge of the cabinet frame with a pencil.

5b: Drilling a hole in the top edge of the cabinet frame.

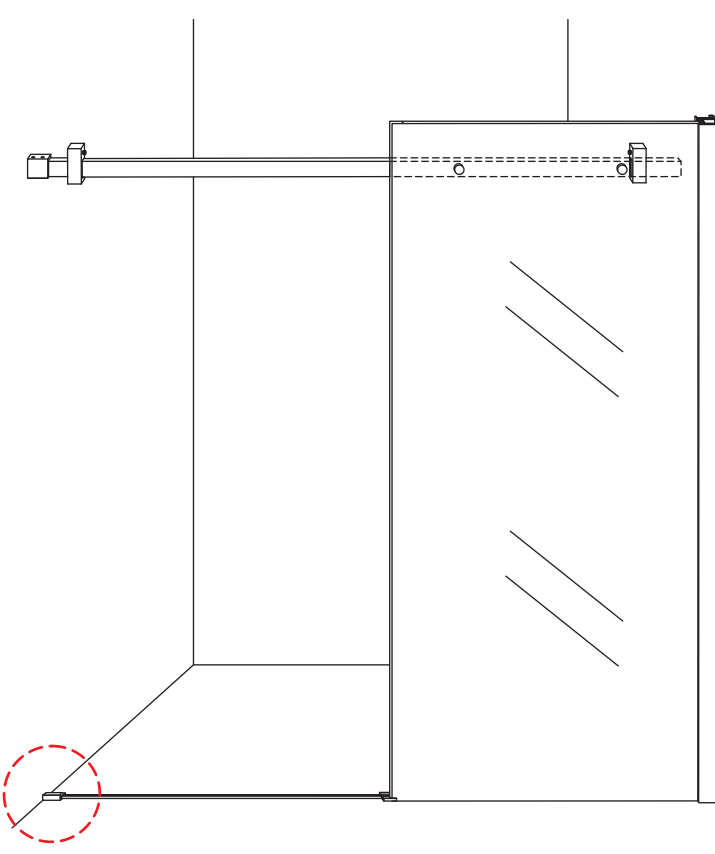
5c: Drilling a hole in the side edge of the cabinet frame.

5d: Inserting a screw into the hole in the top edge.

5e: Inserting a screw into the hole in the side edge.

5f: Tightening the screws with a screwdriver.

Φ6mm X1
4x25 X1
Φ6x30 X1



6a: Marking the top edge of the cabinet frame with a pencil.

6b: Drilling a hole in the top edge of the cabinet frame.

6c: Drilling a hole in the side edge of the cabinet frame.

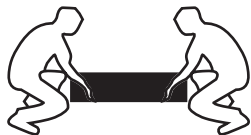
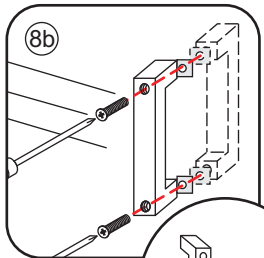
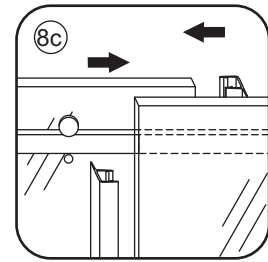
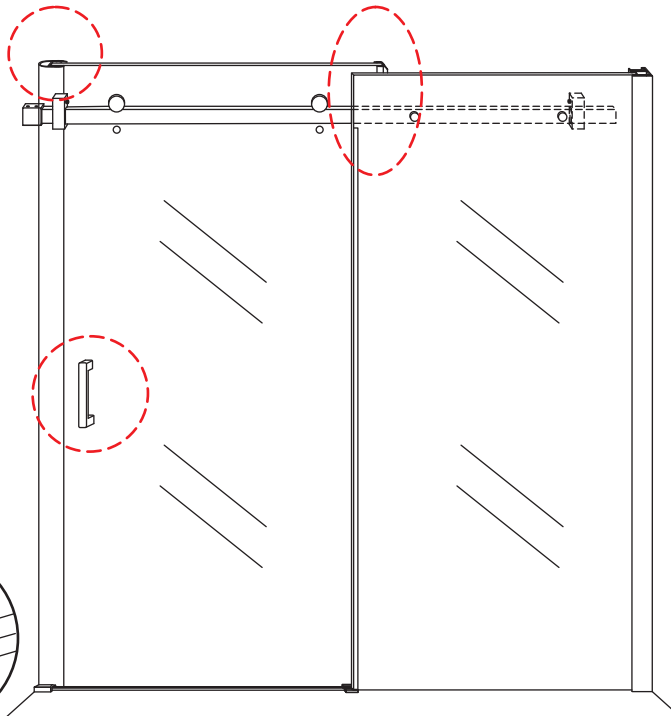
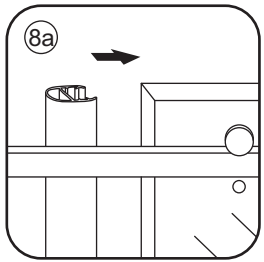
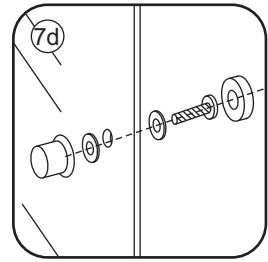
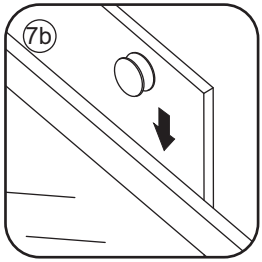
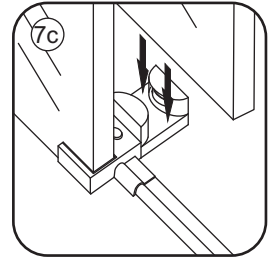
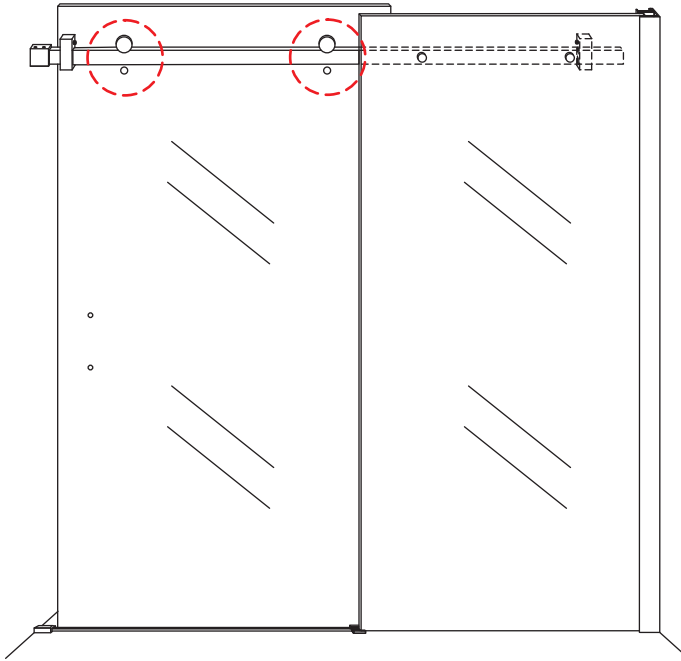
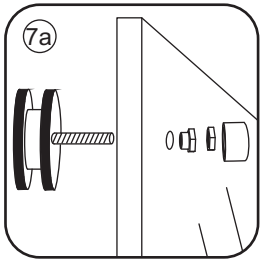
6d: Inserting a screw into the hole in the top edge.

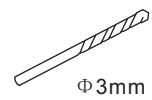
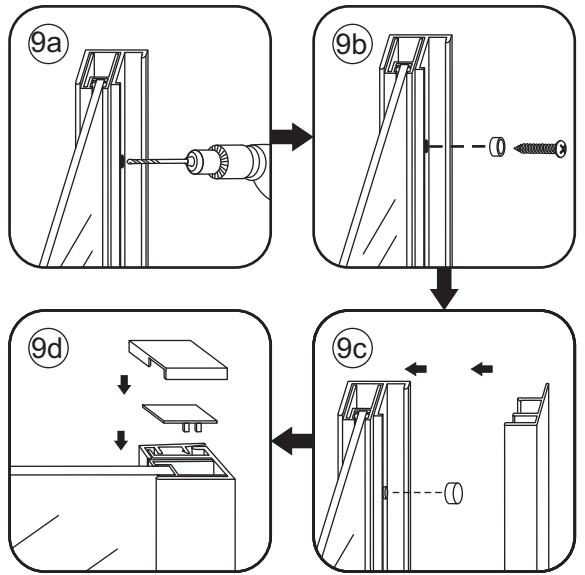
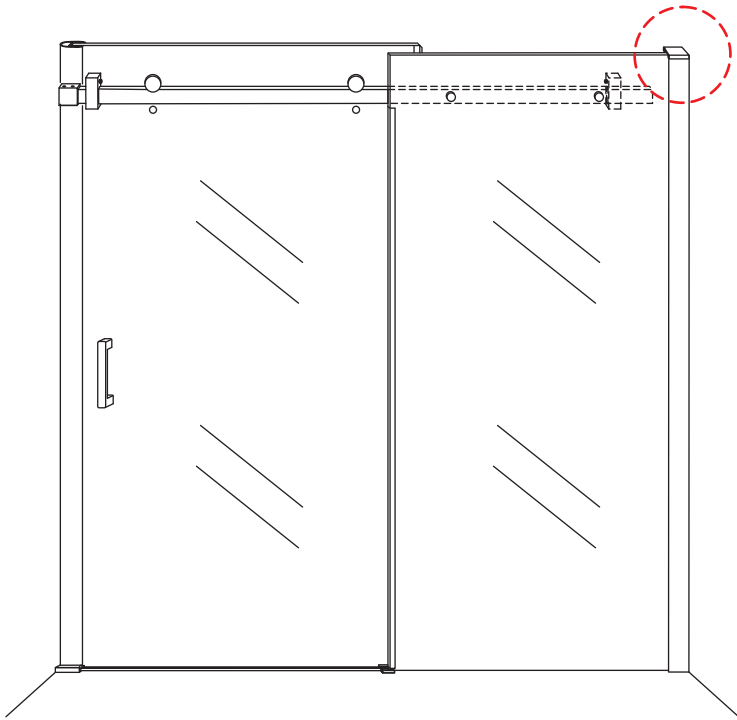
6e: Inserting a screw into the hole in the side edge.

Φ6mm X1
4x25 X1
Φ6x30 X1

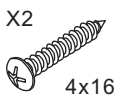


Φ6mm X1
4x25 X1
Φ6x30 X1



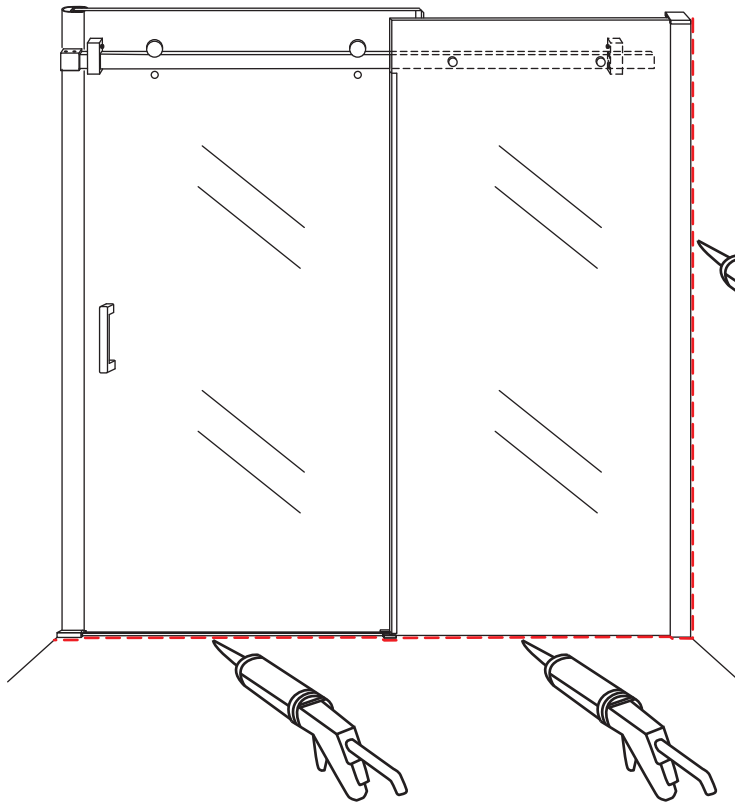


Φ 3mm



X2

4x16



**Voorzie alleen de
buitenzijde van de
cabine van siliconenkit.**



24 uur

