

SQUARO INFINITY

Product data sheet



SQUARO INFINITY

Product Data Sheet – Facts

TECHNICAL INFORMATION:

With Squaro Infinity, Villeroy & Boch is presenting innovative Quaryl® shower trays that can be cut to size.

Unlimited variety, maximum adaptability

- 54 models from 1800 x 1200 to 800 x 700 mm
- Further dimensions can be cut to size down to the last millimetre
- In the case of complex shapes, such as corners, pedestals and projections, special shapes are possible

Minimalist design

- Ultra-flat, rimless look
- Floor-flush integrated designer outlet: colour-coded to match the shower tray and finish with chrome-plated strip, particular easy to clean, removable, therefore extremely functional
- Drainage rate of 48 l/min well above the standard

Colour selection with maximum safety

- For a seamless look: 5 colours to match the Villeroy & Boch floor tiles – Anthracite, Crème, Grey, Brown, Stone White
- Maximum anti-slip class C

Easy and safe installation

- 3 installation methods for maximum flexibility: floor-flush installation, installation on tiles, installation on skirting
- Simple standard assembly



THE FEATURES AT A GLANCE:



Precise, robust, safe and pleasant to the touch thanks to Quaryl®



10 year product guarantee



Easy and fast installation with one of three different methods



Level entry feasible



Highest anti-slip class C

Installation on:

YouTube



<https://www.youtube.com/watch?v=xVjwjTAoSTI>

SQUARO INFINITY

Product Data Sheet - Facts





WIDE RANGE OF MODELS:

		Width in mm						
		700	750	800	900	1000	1100	1200
Length in mm	800	•	•	•	•	•	•	•
	900	•	•	•	•	•	•	•
	1000	•	•	•	•	•	•	•
	1100	•	•	•	•	•	•	•
	1200	•	•	•	•	•	•	•
	1300	•	•	•	•			
	1400	•	•	•	•	•		
	1500	•	•	•	•	•		
	1600	•	•	•	•	•		
	1700	•	•	•	•	•		
	1800	•	•	•	•	•		

cut
 uncut

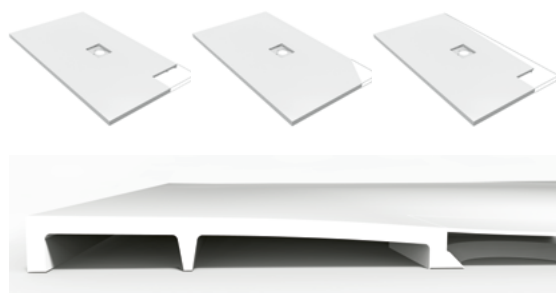
Customised on site:

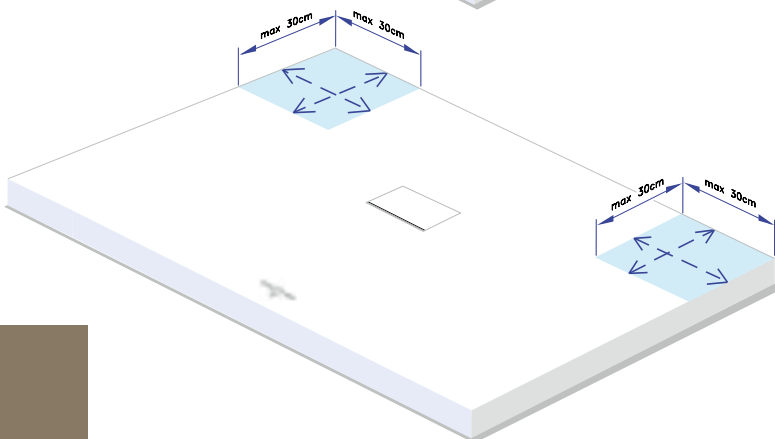
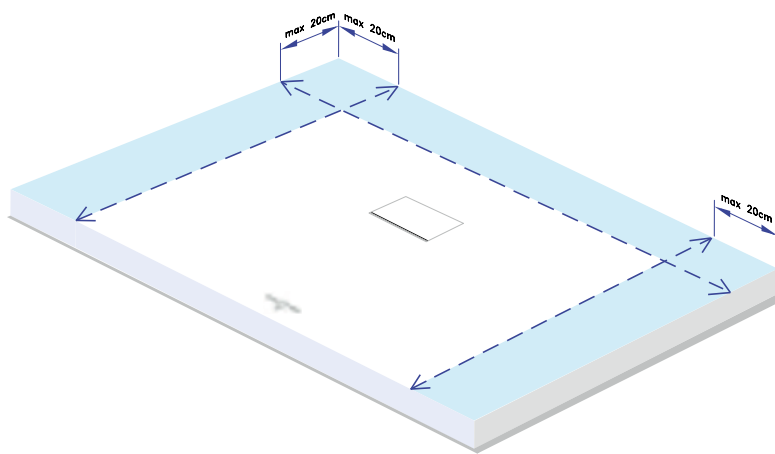
<https://www.youtube.com/watch?v=xVjwjTAoSTI>

SPECIAL SHAPES:

Milimetre-accurate cutting (cutting tolerance +/-1mm) possible in the marked area. Bevel cuts and custom cutouts from the factory or on site.



Ribbed technology for extra strength and stability



AVAILABLE COLOURS:



RW Stone White 1S Anthracite 2S Crème 3S Grey 4S Brown

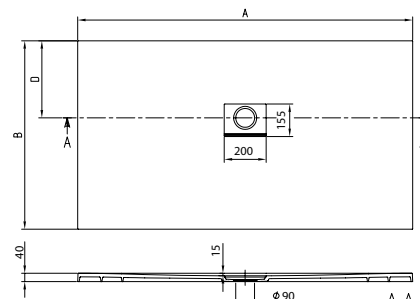
SQUARO INFINITY

Product Data Sheet - Sizes



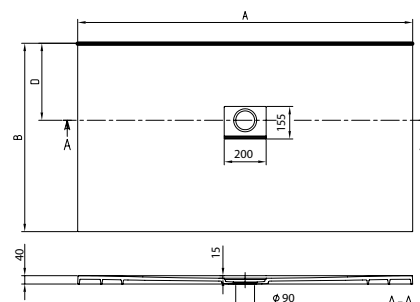
STANDARD MODELS FOR ALL INSTALLATION TYPES:

Size	A	B	EN	Article number
180x100 cm	1800	1000	418	UDQ 1810 SQI 2V - XX
180x80 cm	1800	800	318	UDQ 1880 SQI 2V - XX
160x90 cm	1600	900	368	UDQ 1690 SQI 2V - XX
160x80 cm	1600	800	318	UDQ 1680 SQI 2V - XX
140x90 cm	1400	900	368	UDQ 1490 SQI 2V - XX
140x80 cm	1400	800	318	UDQ 1480 SQI 2V - XX
120x120 cm	1200	1200	518	UDQ 1212 SQI 1V - XX
120x90 cm	1200	900	368	UDQ 1290 SQI 2V - XX
120x80 cm	1200	800	318	UDQ 1280 SQI 2V - XX
100x100 cm	1000	1000	418	UDQ 1010 SQI 1V - XX
100x90 cm	1000	900	368	UDQ 1090 SQI 2V - XX
90x90 cm	900	900	368	UDQ 9090 SQI 1V - XX
90x80 cm	900	800	318	UDQ 9090 SQI 2V - XX



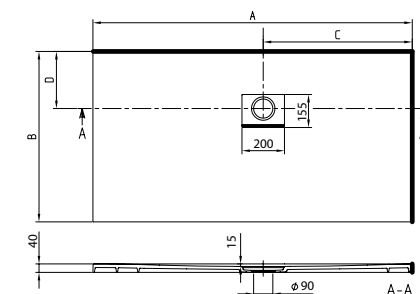
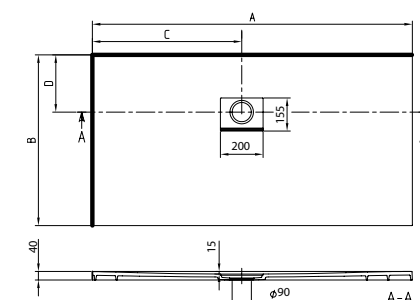
LONG SIDE CUTTED AGAINST THE WALL, FOR ALL INSTALLATION TYPES:

Size	A	B	EN	Article number
180x90 cm	1800	900	318	UDQ 1890 SQI 2BV - XX
180x75 cm	1800	750	268	UDQ 1875 SQI 2BV - XX
180x70 cm	1800	700	218	UDQ 1870 SQI 2BV - XX
160x75 cm	1600	750	268	UDQ 1675 SQI 2BV - XX
160x70 cm	1600	700	218	UDQ 1670 SQI 2BV - XX
140x75 cm	1400	750	268	UDQ 1475 SQI 2BV - XX
140x70 cm	1400	700	218	UDQ 1470 SQI 2BV - XX
120x100 cm	1200	1000	318	UDQ 1210 SQI 2BV - XX
120x75 cm	1200	750	268	UDQ 1275 SQI 2BV - XX
120x70 cm	1200	700	218	UDQ 1270 SQI 2BV - XX
100x80 cm	1000	800	268	UDQ 1080 SQI 2BV - XX
90x75 cm	900	750	268	UDQ 9075 SQI 2BV - XX
90x70 cm	900	700	218	UDQ 9070 SQI 2BV - XX



CORNER INSTALLATION, LEFT/RIGHT AGAINST THE WALL:

Size	A	B	C	EN	Article number
170x100 cm	1700	1000	800	418	UDQ 1710 SQI 2*V - XX
170x90 cm	1700	900	800	318	UDQ 1790 SQI 2*V - XX
170x80 cm	1700	800	800	318	UDQ 1780 SQI 2*V - XX
170x75 cm	1700	750	800	268	UDQ 1775 SQI 2*V - XX
170x70 cm	1700	700	800	218	UDQ 1770 SQI 2*V - XX
160x100 cm	1600	1000	700	418	UDQ 1610 SQI 2*V - XX
150x90 cm	1500	900	700	368	UDQ 1590 SQI 2*V - XX
150x80 cm	1500	800	700	318	UDQ 1580 SQI 2*V - XX
150x75 cm	1500	750	700	268	UDQ 1575 SQI 2*V - XX
150x70 cm	1500	700	700	218	UDQ 1570 SQI 2*V - XX
130x90 cm	1300	900	600	368	UDQ 1390 SQI 2*V - XX
130x80 cm	1300	800	600	318	UDQ 1380 SQI 2*V - XX
130x75 cm	1300	750	600	268	UDQ 1375 SQI 2*V - XX
130x70 cm	1300	700	600	218	UDQ 1370 SQI 2*V - XX
110x90 cm	1100	900	500	368	UDQ 1190 SQI 2*V - XX
110x80 cm	1100	800	500	318	UDQ 1180 SQI 2*V - XX
110x75 cm	1100	750	500	268	UDQ 1175 SQI 2*V - XX
110x70 cm	1100	700	500	218	UDQ 1170 SQI 2*V - XX
100x75 cm	1000	750	500	268	UDQ 1075 SQI 2*V - XX
100x70 cm	1000	750	500	218	UDQ 1070 SQI 2*V - XX
80x80 cm	800	800	500	318	UDQ 1010 SQI 1*V - XX
80x75 cm	800	750	500	268	UDQ 8075 SQI 2*V - XX
80x70 cm	800	700	500	218	UDQ 8070 SQI 2*V - XX



The installation height of the shower tray can be reduced by 30 mm if the Viega outlet fitting art. no. 634 100 is used. Please note: This outlet fitting does not conform to EN 274.

* in article number

L – on left against wall | R – on right against wall

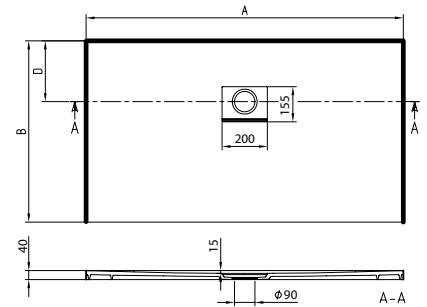
* Outlet on all models Ø 90 mm

SQUARO INFINITY

Product Data Sheet - Sizes


ONLY FLUSH FIT INSTALLATION:

Size	A	B	EN	Article number
170 x 100 cm	1700	1000	418	UDQ 1710 SQI 2IV - XX
170 x 90 cm	1700	900	318	UDQ 1790 SQI 2IV - XX
170 x 80 cm	1700	800	318	UDQ 1780 SQI 2IV - XX
170 x 75 cm	1700	750	268	UDQ 1775 SQI 2IV - XX
170 x 70 cm	1700	700	218	UDQ 1770 SQI 2IV - XX
160 x 100 cm	1600	1000	418	UDQ 1610 SQI 2IV - XX
150 x 100 cm	1500	1000	418	UDQ 1510 SQI 2IV - XX
150 x 90 cm	1500	900	368	UDQ 1590 SQI 2IV - XX
150 x 80 cm	1500	800	318	UDQ 1580 SQI 2IV - XX
150 x 75 cm	1500	750	268	UDQ 1575 SQI 2IV - XX
150 x 70 cm	1500	700	218	UDQ 1570 SQI 2IV - XX
140 x 100 cm	1400	1000	418	UDQ 1410 SQI 2IV - XX
130 x 90 cm	1300	900	368	UDQ 1390 SQI 2IV - XX
130 x 80 cm	1300	800	318	UDQ 1380 SQI 2IV - XX
130 x 75 cm	1300	750	268	UDQ 1375 SQI 2IV - XX
130 x 70 cm	1300	700	218	UDQ 1370 SQI 2IV - XX
110 x 90 cm	1100	900	368	UDQ 1190 SQI 2IV - XX
110 x 80 cm	1100	800	318	UDQ 1180 SQI 2IV - XX
110 x 75 cm	1100	750	268	UDQ 1175 SQI 2IV - XX
110 x 70 cm	1100	700	218	UDQ 1170 SQI 2IV - XX
100 x 75 cm	1000	750	268	UDQ 1075 SQI 2IV - XX
100 x 70 cm	1000	700	218	UDQ 1070 SQI 2IV - XX
80 x 80 cm	800	800	318	UDQ 8080 SQI 1IV - XX
80 x 75 cm	800	750	268	UDQ 8075 SQI 2IV - XX
80 x 70 cm	800	700	218	UDQ 8070 SQI 2IV - XX



* Waste for all models Ø 90 mm

MEASURING SPECIAL SHAPES:



Bestellformular Squaro Infinity Duschwannen

Ordernummer Großhändler: _____
 Firmenname: _____
 Ansprechpartner: _____
 Postfach, Ort: _____
 Straße: _____
 Telefon: _____
 Telefax: _____
 E-Mail: _____

Achtung:
 Die Länge und Breite sind die tatsächliche Größe der gewünschten Duschwanne.
 Bitte in jedem Fall eine umlaufende, notwendige Dehnungsfuge von 5 mm bei der Planung berücksichtigen.

Länge A (siehe Auswahlmöglichkeit): _____ mm (Toleranz ± 1 mm)
 Breite B (siehe Auswahlmöglichkeit): _____ mm (Toleranz ± 1 mm)

Auswahlmöglichkeiten: _____ = schreibbarer Bereich

x 100 mm

x 200 mm

x 100 mm

x 200 mm

Installationsposition: Linke Ausführung (linke Seite geschritten und an die Wand platziert, flächenbündig integriert oder 40 mm auf dem Boden) Rechte Ausführung (rechte Seite geschritten und an die Wand platziert, flächenbündig integriert oder 40 mm auf dem Boden)

x 100 mm

x 200 mm

x 100 mm

x 200 mm

x 100 mm

x 200 mm

Installationsposition: Wandauführung (flächenbündig integriert oder 40 mm auf dem Boden) Wandauführung (flächenbündig integriert) Nischenauführung (flächenbündig integriert oder 40 mm auf dem Boden)

* Bei Varianten auf dem Boden basiert diese Länge (A) auf die Größen „Standard Modelle universal einbaubar“ (siehe Seite 999)

Farbe Duschwanne: 51 (Anthrazit) 52 (Schwarz) 53 (Brau) 54 (Braun) 41 (Edelstahl)

Sondermaße: Nein (keine zusätzlichen Informationen nötig) Ja (bitte Zeichnung beifügen, siehe Seite 999)

x 100 mm

x 200 mm

x 100 mm

x 200 mm

x 100 mm

x 200 mm

Die Preise sind in Euro und ohne MwSt.
Alle Maße sind angegeben in mm.

The installation height of the shower tray can be reduced by 30 mm if the Viega outlet fitting art. no. 634 100 is used. Please note: This outlet fitting does not conform to EN 274.

Please order special shapes with this order form.
pro.villeroy-boch.com/order-form-squaro-infinity



SQUARO INFINITY

Product Data Sheet – Sealing

Water-contaminated surfaces must be permanently protected from moisture. Particularly frequently there is a leakage at the interface between the tub rim of shower trays and the wall or the floor and causes harm. Silicone joints are defined as pure maintenance joints and serve mainly for visual and hygienic purpose. Without an additional sealing behind the silicone joint, moisture can penetrate under the shower tray and therefor into the building structure.

APPLICABLE STANDARDS AND REGULATIONS:

The sealing of sanitary products is governed by the following standards and regulations:

- ETAG 022 “Guideline for european technical approval of watertight covering kits for wetroom floors and/or walls”
- ZDB-bulletin “Composite Sealing”
- DIN 18195-5 “Water-proofing of buildings”
- DIN 18534-1:2015-07 “Waterproofing for indoor applications”
- Building Rules List & Technical Building Regulations
- BIV- und BEB-Leaflet
- ÖNORM B 2207 “Laying of tiles, flags and mosaics – Contract to provide services”

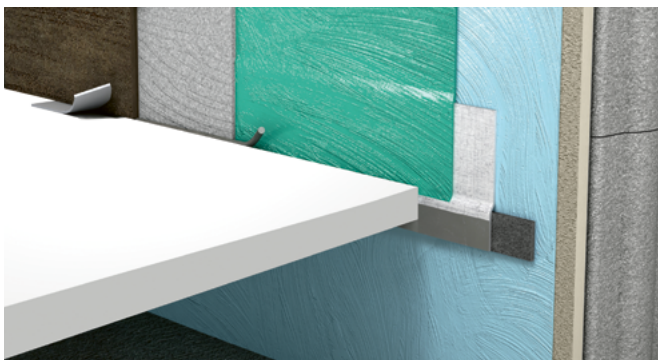
For bathrooms, the complaint class A0 (wall and floor area) applies to areas which are directly and indirectly exposed and which are not very frequently used for domestic and cleaning water, e.g. in the private bathroom.










Note

For flush-mounted shower trays with an edge height of less than 20 mm as well as for cutted shower trays, we recommend applying a composite seal according to ETAG 022 below the shower tray.

INSTALLATION OF SHOWER TRAYS IN CORNER SITUATIONS OR ON WALLS:

Not suitable for flush-fit installation



	Masonry		Tile cord
	Render		Tile cement
	Compound sealing		Tile separation strip
	Sound insulation strip		Compound sealing
	MEPA-Aquaproof		

MEPA Aquaproof set for corner installation



Art. no. 9409 07 00

Contents:

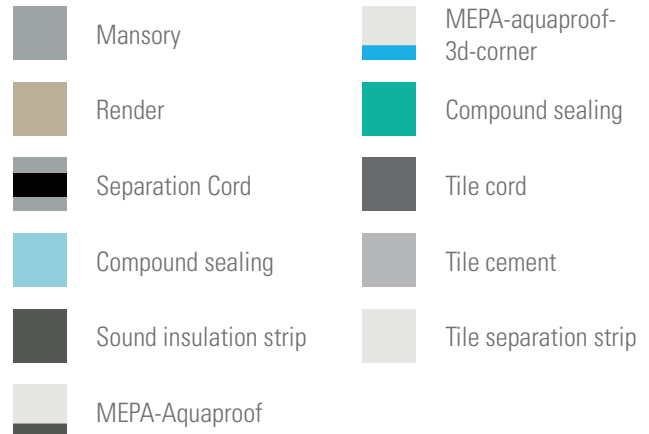
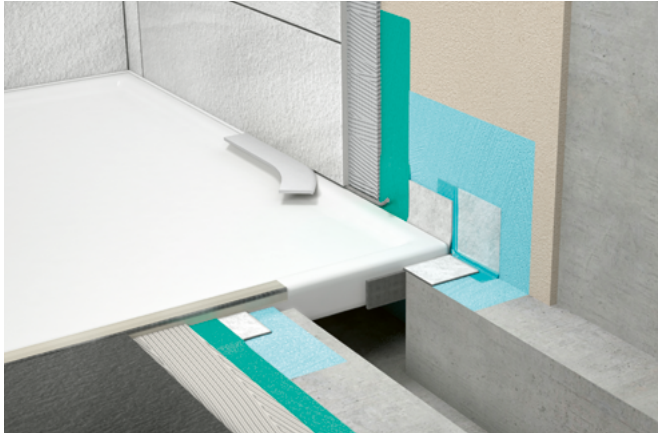
- 1 roll sealing tape
- 1 roll sound insulation strip
- 1 roll sound insulation strip
- 1 pressure roller

SQUARO INFINITY

Product Data Sheet – Sealing

FLUSH FIT INSTALLATION OF SHOWER TRAYS:

Not suitable for cut shower trays



MEPA Aquaproof set for flush-fit installation



Art. no. 9409 08 00

Contents:

- 1 roll sealing tape (6 m)
- 1 roll sound insulation strip (6 m)
- 1 roll tile separation strip (3,80 m)
- 1 pressure roller
- 3 aquaproof 3D sealing corners
- 1 connector
- 1 roll tile separation cord (2,90 m)

THE SQUARO INFINITY SHOWER FAMILY FOLLOWS THE FOLLOWING REQUIREMENTS:

Sound insulation

DIN 4109 “Sound insulation in buildings”

VDI 4100 “Sound insulation between rooms in buildings”

SIA 181 “Sound insulation in buildings”

Anti-slip properties

DIN 51097: 1992-11 “Testing of floor coverings – wet-loaded barefoot areas”

Aquaproof & Water drainage

According to ETAG 022 “Test certificate Aquaproof in combination with MEPA Aquaproof 3D”

According to DIN 1253 “Gullies for buildings”

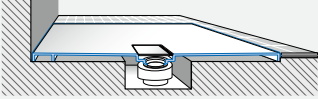
Testing logs are available in the download section under:
pro.villeroy-boch.com/en/amo/bathroom-and-wellness/products/product-novelties/squaro-infinity.html



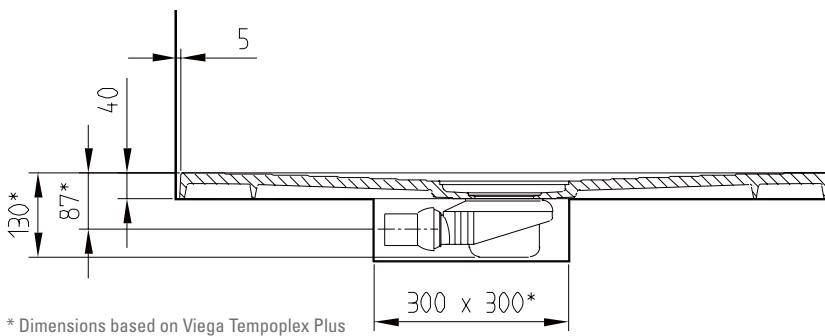
SQUARO INFINITY

Product Data Sheet - Installation Options

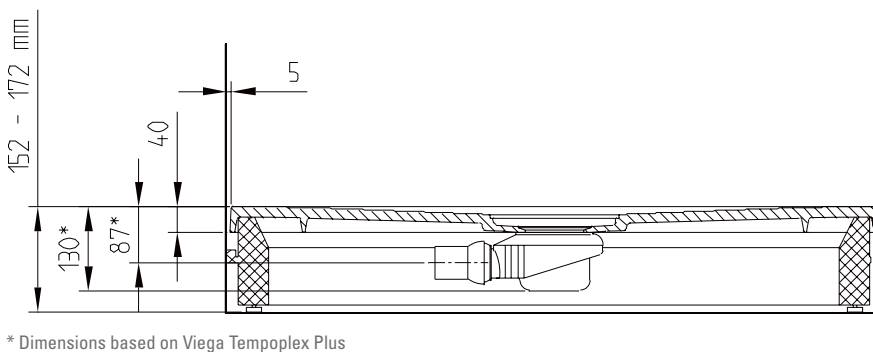
OVERVIEW:

	STEEL FRAME Art. No. U91411400	STYRODUR INSTALLATION FRAME Art. No. U91411000 (900 x 800 mm – 1000 x 1000 mm) Art. No. U91411100 (1200 x 800 mm – 1800 x 1000 mm)	OVERLAYING WITH RIM SUPPORT
<p>Flush-fit installation</p> 	✓	✓	✓
<p>Installation on tiles</p> 	✗	✗	✓
<p>Installation on a base</p> 	✓	✓	✓

INSTALLATION OVERLAYING OR FLUSH-FIT:



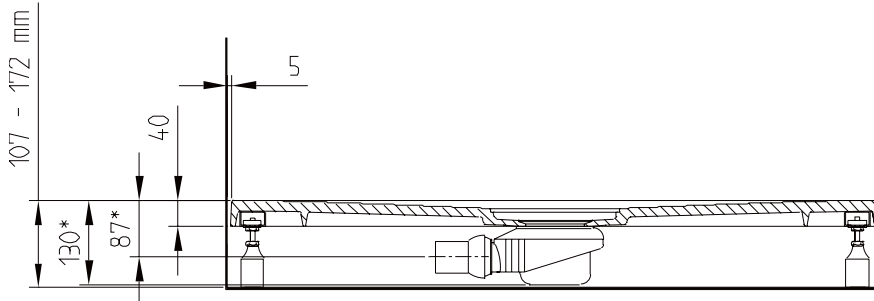
INSTALLATION WITH STYRODUR SET:



SQUARO INFINITY

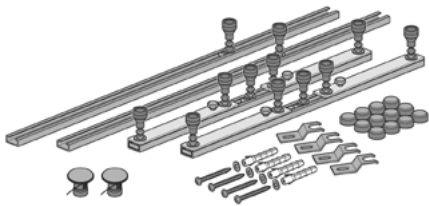
Product Data Sheet - Installation Options

INSTALLATION WITH STEEL FRAME:



* Dimensions based on Viega Tempoplex Plus

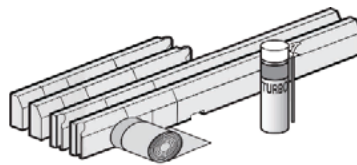
INSTALLATION ACCESSORIES:



Steel frame for all Squaro Infinity sizes

Can be adjusted to the size.
Height-adjustable (90 – 155 mm)
incl. sound insulated feet.

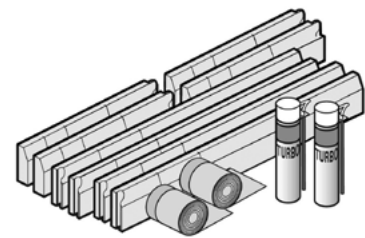
Art. No. U91411400



Styrodur Installation Set for small sizes

900 x 800 – 1000 x 1000 mm
Height-adjustable polystyrene rim support (135 – 155 mm), incl. sealing tape, assembly foam and adhesive.

Art. No. U91411000



Styrodur installation set for large sizes

1200 x 800 – 1800 x 1000 mm
Height-adjustable polystyrene rim support (135 – 155 mm), incl. sealing tape, assembly foam and adhesive

Art. No. U91411100

SQUARO INFINITY

Product Data Sheet – Facts

SCOPE OF DELIVERY:

Included: Outlet cover in matching matt colour with chrome-plated strip.

Not included: All shower trays are supplied without support/base.

Polystyren installation set and base frame must be ordered separately.

TEST CERTIFICATE:

For the Squaro Infinity Shower tray made of Quaryl exists the following test certificates:

- Waterproofness in case of using the MEPA-Aquaproof 3D sealing tape in combination with the shower tray Squaro Infinity by SäureFliesner-Vereinigung e.V. Großburgwedel, 2017
- Installation sound level and footstep sound by Fraunhofer-Institut für Bauphysik, Stuttgart, 2017

CLEANING:

You can find the instructions on cleaning here.



Cleaning Quaryl
<https://www.youtube.com/watch?v=5n5Mme0bt1c>



VILLEROY & BOCH

GERMANY

*Villeroy & Boch AG
Bathroom and Wellness Division
Hauptverwaltung
66693 Mettlach*

*Tel. +49 6864 81-0
Fax +49 6864 81-1484*

UNITED KINGDOM

*Villeroy & Boch (UK) Limited
Bathroom and Wellness Division
267 Merton Road
London SW 18 5JS*

*Tel.: +44 208 871 40 28
Fax +44 208 870 37 20*



Villeroy & Boch

1748