

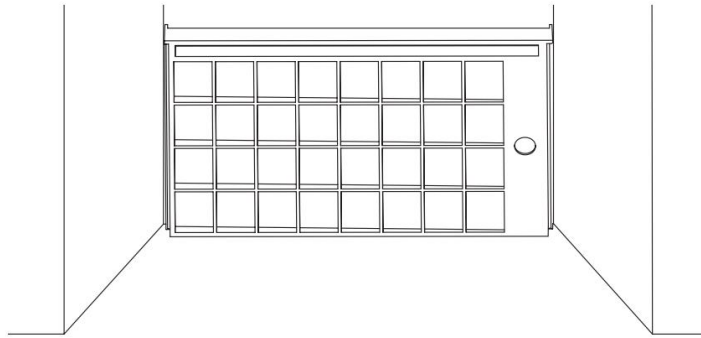
Shower Base Installation

Pre-Installation Checklist

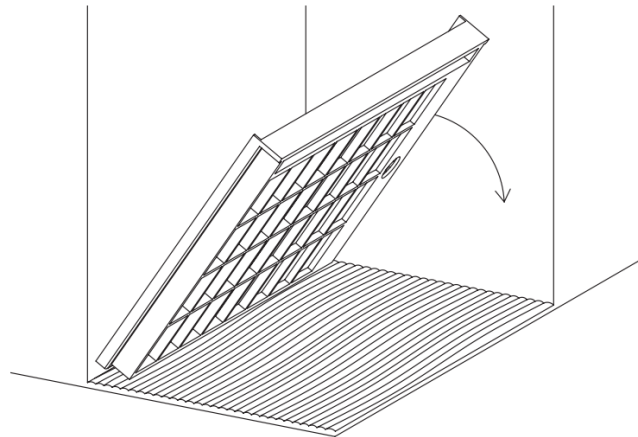
1. Damage from shipping or delivery must be reported to carrier immediately. Do not install damaged shower base. Company is not responsible for damage occurring during shipping and/or handling.
2. Factory defects must be reported to company before base is installed. Defects claimed after installation will be excluded from warranty.
3. Keep boxed and palletized shower bases as received in a temperature-controlled Storage. Do not store bases outside in extreme hot or cold environment.
4. Shower pans should remain in the box during handling and staging to help avoid damage. Keep pan horizontal.

Standard Installation

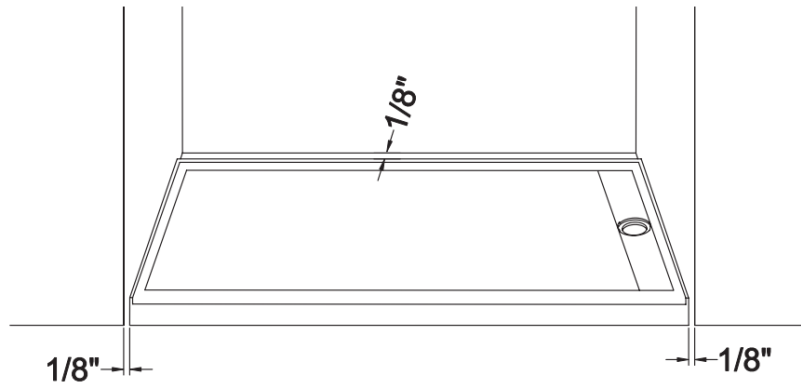
1. Establish a flat and level surface. Make sure the area is clean and free of dust and debris. Make sure the wall framing is square and measurements are to the pan specification.
2. Plumber should connect the drain to the pan.
3. Carefully set the pan into the niche opening and gently stand up on end.



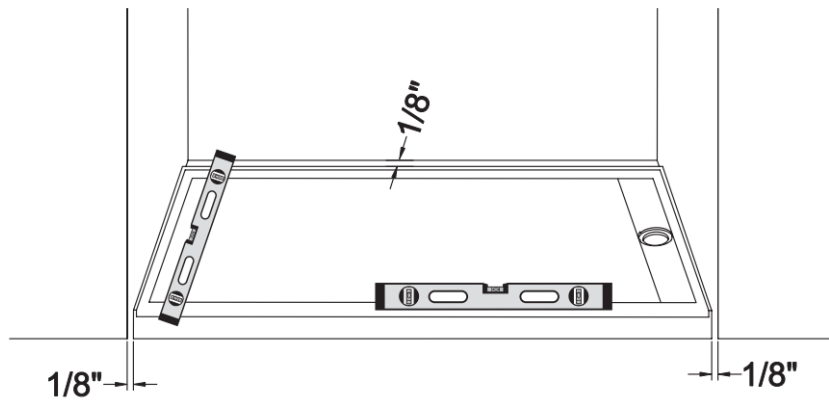
4. Mix one 30 lb bag of thinset to a heavy slump, consistent to cement. Use 1/2" x 3/8" square notch trowel to cover the entire area of the floor where the shower pan will sit, about 1/2"-3/4" bed.



5. Carefully lower the pan into place. Pan should sit $1/8''$ off the framed alcove to allow for expansion.



6. After setting the pan in place, check level, front to back and side to side. Make sure the pan does not rock or move.



7. Substrate material should not be installed until after the plumber has connected the plumbing.

8. Be sure the installer leaves an expansion joint approximately $1/4''$ above the shower pan flange. The wall tile or panels should sit $1/8'' - 1/4''$ off the ledge of the pan.

